



CONSOLIDATED BILL OF MATERIALS (BOM) FOR STANDARD MAX[®]-SERIES GEAR PUMPS



**Models M0-M4 Sealed,
Close-Coupled**



**Models M5-M8 Sealed &
Models M0-M8 Mag-Drive,
Close-Coupled**

Table of Contents

Models M0-M4:	SEALED: 316 SS Construction	2-3
	MAG-DRIVE: 316 SS Construction	4-5
Models M5-M8:	SEALED: 316 SS Construction	6-7
	MAG-DRIVE: 316 SS Construction	8-9
Models M4, M6 & M8:	MAG-DRIVE: Titanium Construction	10-11
Appendix 1:	Exploded View Reference Drawings	12-14
Appendix 2:	Meaning of Abbreviated Terms	15

Liquiflo Chemical Processing Pumps™	Max[®]-Series Gear Pumps BOM: SEALED, CC Models M0 thru M4
---	--

Part Description	Drwg. Item #	316 Stainless Steel Construction						
		Code	Material	M0	M1	M2	M3	M4
Position 2 – Basic Material & Port Type (Center Housing, Pins, Coupling Parts & Hardware)								
Center Housing, NPT	20	S	316 SS			740002		740001
Center Housing, Flanged ¹	20	L	316 SS			740011		740013
Center Housing, BSPT	20	X	316 SS			740025		740023
Pin, Bearing Lock	25	S, L, X	Teflon				361801 (4)	
Pin, Bearing Lock (High Temperature)	25	S, L, X	316 SS				361807 (4)	
Pin, Housing Alignment	23	S, L, X	416 SS				780801 (4)	
Coupling Hub, Pump – 1/2"	29	S, L, X	Cast Iron				5267	
Coupling Spider	30	S, L, X	Hytrel				5277	
Key, Coupling (Pump Shaft)	27	S, L, X	316 SS				741900	
Bolt, Housing (5/16-18 x 2.0/2.5)	4	S, L, X	18-8 SS			641111 (4)		641109 (4)
Bolt, Front Housing (5/16-18 x 5/8)	24	S, L, X	18-8 SS				641110 (4)	
Bolt, Seal Housing (1/4-28 x 5/8)	13	S, L, X	18-8 SS				785006 (4)	
Bolt, Mounting (3/8-16 x 7/8) ²	15	S, L, X	18-8 SS				742001 (4)	
Tag, Rear Housing	–	S, L, X	316 SS				780810	
Rivet, Tag (#2 x 1/4)	–	S, L, X	18-8 SS				780805 (2)	
Position 3 – Drive Gear								
Gear, Drive (LH)	21	6	316 SS	740640	740660	740614	740606	740622
Gear-Shaft, Drive (LH)	21	9	17-4 PHSS	740364	740366	740310	740308	740306
Gear, Drive (RH)	21	P	PEEK	740641	740661	740613	740605	740621
Key, Gear	22	6, P	316 SS			950029		741900
Retaining Ring, Gear	10	6, P	316 SS				746702 (2)	
Position 4 – Idler Gear								
Gear, Idler (RH)	6	3	Teflon	740632	740652	740611	740603	740619
Gear, Idler (RH)	6	6	316 SS	740630	740650	740610	740602	740618
Gear-Shaft, Idler (RH)	6	9	17-4 PHSS	740360	740362	740302	740300	740304
Gear, Idler (RH)	6	P	PEEK	740631	740651	740609	740601	740617
Key, Gear	22	3, 6, P	316 SS			950029		741900
Retaining Ring, Gear	10	3, 6, P	316 SS				746702 (2)	
Position 5 – Wear Plates								
Wear Plate, Relieved	7	3	Teflon	740500 (4)	740501 (4)	310590 (4)		340521 (4)
Wear Plate, Relieved	7	4	Ceramic	740502 (4)	740503 (4)	340527 (4)		340522 (4)
Wear Plate, Relieved	7	E	Carbon 60	740504 (4)	740505 (4)	310596 (4)		340523 (4)
Wear Plate, Relieved	7	P	PEEK	740506 (4)	740507 (4)	310591 (4)		340524 (4)
Position 6 – Bearings								
Bearing	3	B	SiC			740413 (4)		
Bearing	3	E	Carbon 60			740401 (4)		
Bearing	3	P	PEEK			740414 (4)		
Position 7 – Motor Frame (Mounting Bracket & Mechanical Coupling)								
Bracket – NEMA 56C/56HC	26	0	316 SS			780950		
Coupling Hub, Motor – 5/8"	28	0	Cast Iron			5270		
Bracket – NEMA 143/145TC	26	1	316 SS			780950		
Coupling Hub, Motor – 7/8"	28	1	Cast Iron			5271		
Bracket – IEC 71 - B5 Flange	26	2	316 SS			780951		
Coupling Hub, Motor – 14 mm	28	2	Cast Iron			5274		
Bracket – IEC 80 - B5 Flange	26	3	316 SS			780952		
Coupling Hub, Motor – 19 mm	28	3	Cast Iron			5275		
Bracket – IEC 90 - B5 Flange	26	4	316 SS			780952		
Coupling Hub, Motor – 24 mm	28	4	Cast Iron			5276		

1 - Flanges are ANSI 150# RF. Other flanges are available; consult factory.

2 - For NEMA motor frames.

See page 12 for Reference Drawing.

Note: All bolts are SHCS type.

Liquiflo Chemical Processing Pumps™	Max[®]-Series Gear Pumps BOM: SEALED, CC Models M0 thru M4
---	--

Part Description	Drwg. Item #	316 Stainless Steel Construction						
		Code	Material	M0	M1	M2	M3	M4
Position 8 – Seal Type								
Mechanical Seal, Single	14	U	316 SS / Carbon			A-867058		
Seal Seat, SMS	16	U	SiC			621015		
Retaining Ring, SMS	10	U	316 SS			746702		
Plug, 1/8 NPT (Socket Head)	9	U	316 SS			362308 (2)		
Mechanical Seal, Double	14	F	316 SS / Carbon			A-867031		
Seal Seat, DMS	16	F	SiC			621015 (2)		
Seal Housing	11	U, F	316 SS			740950		
Position 9 – Bearing Flush Option (Front & Rear Housings)								
Front Housing, Standard	8	0	316 SS			740100		
Front Housing, IBF	8	2	316 SS			740105		
Rear Housing, Standard	2	0	316 SS			740200		
Rear Housing, IBF	2	2	316 SS			740210		
Position 10 – Shafts								
Drive Shaft, Uncoated	19	0	316 SS		740312			740313
Drive Shaft, CO-Coated	19	1	316 SS/CO		740312-CO			740313-CO
Drive Shaft, TC-Coated	19	2	316 SS/TC		740312-TC			740313-TC
Idler Shaft, Uncoated	1	0	316 SS		740314			740315
Idler Shaft, CO-Coated	1	1	316 SS/CO		740314-CO			740315-CO
Idler Shaft, TC-Coated	1	2	316 SS/TC		740314-TC			740315-TC
Gear-Shaft, Drive (LH)	21	3	17-4 PHSS					Position 3 = 9
Gear-Shaft, Idler (RH)	6	3	17-4 PHSS					Position 4 = 9
Position 11 – O-Rings								
O-ring, Housing (2-036)	5	0	Teflon			441103 (2)		
O-ring, Seal Housing (2-028)	18	0	Teflon			207015 (1)		
O-ring, Seal Seat, SMS (2-210)	17	0	Viton			371026 (1)		
O-ring, Seal Seat, DMS (2-210)	17	0	Viton			371026 (2)		
O-ring, Housing (2-036)	5	V	Viton			441104 (2)		
O-ring, Seal Housing (2-029)	18	V	Viton			207014 (1)		
O-ring, Seal Seat, SMS (2-210)	17	V	Viton			371026 (1)		
O-ring, Seal Seat, DMS (2-210)	17	V	Viton			371026 (2)		
O-ring, Housing (2-036)	5	T	Teflon			441103 (2)		
O-ring, Seal Housing (2-028)	18	T	Teflon			207015 (1)		
O-ring, Seal Seat, SMS (2-210)	17	T	Kalrez			371029 (1)		
O-ring, Seal Seat, DMS (2-210)	17	T	Kalrez			371029 (2)		
O-ring, Housing (2-036)	5	K	Kalrez			441106 (2)		
O-ring, Seal Housing (2-029)	18	K	Kalrez			207024 (1)		
O-ring, Seal Seat, SMS (2-210)	17	K	Kalrez			371029 (1)		
O-ring, Seal Seat, DMS (2-210)	17	K	Kalrez			371029 (2)		
Suffix – Trim Options								
Temperature Trim (Gears/Bearings)	–	-8(T) ³	–					Consult Factory
Viscosity Trim (Gears)	–	-9D, -9T	–					

3 - T = Application Temperature in °F (e.g., -8(300) = Temperature Trim at 300°F).

Liquiflo Chemical Processing Pumps™	Max[®]-Series Gear Pumps BOM: MAG-DRIVE, CC Models M0 thru M4
---	---

Part Description	Drwg. Item #	316 Stainless Steel Construction						
		Code	Material	M0	M1	M2	M3	M4
Position 2 – Basic Material & Port Type (Center Housing, C. Can, Pins & Hardware)								
Center Housing, NPT	21	S	316 SS		740002			740001
Center Housing, Flanged ¹	21	L	316 SS		740011			740013
Center Housing, BSPT	21	X	316 SS		740025			740023
Containment Can	12	S, L, X	316 SS		740913			
Pin, Bearing Lock	28	S, L, X	Teflon		361801 (4)			
Pin, Bearing Lock (High Temperature)	28	S, L, X	316 SS		361807 (4)			
Pin, Housing Alignment	24	S, L, X	416 SS		780801 (4)			
Bolt, Housing (5/16-18 x 2.0/2.5)	4	S, L, X	18-8 SS		641111 (4)			641109 (4)
Bolt, Front Housing (3/8-16 x 1-1/4)	26	S, L, X	18-8 SS		742002 (4)			
Nut, Front Housing (3/8-16)	25	S, L, X	18-8 SS		S1003 (4)			
Lockwasher, Front Housing (3/8)	29	S, L, X	18-8 SS		S1004 (4)			
Bolt, Cont. Can (5/16-24 x 1/2)	18	S, L, X	18-8 SS		864007 (6)			
Bolt, Mounting (3/8-16 x 1) ²	15	S, L, X	18-8 SS		781118 (4)			
Tag, Rear Housing	–	S, L, X	316 SS		780810			
Rivet, Tag (#2 x 1/4)	–	S, L, X	18-8 SS		780805 (2)			
Position 3 – Drive Gear								
Gear, Drive (LH)	22	6	316 SS	740640	740660	740614	740606	740622
Gear-Shaft, Drive (LH)	–	9	17-4 PHSS	X	X	X	X	X
Gear, Drive (RH)	22	P	PEEK	740641	740661	740613	740605	740621
Key, Gear	23	6, P	316 SS	950029				741900
Retaining Ring, Gear	27	6, P	316 SS	746702 (2)				
Position 4 – Idler Gear								
Gear, Idler (RH)	6	3	Teflon	740632	740652	740611	740603	740619
Gear, Idler (RH)	6	6	316 SS	740630	740650	740610	740602	740618
Gear-Shaft, Idler (RH)	–	9	17-4 PHSS	X	X	X	X	X
Gear, Idler (RH)	6	P	PEEK	740631	740651	740609	740601	740617
Key, Gear	23	3, 6, P	316 SS	950029				741900
Retaining Ring, Gear	27	3, 6, P	316 SS	746702 (2)				
Position 5 – Wear Plates								
Wear Plate, Relieved	7	3	Teflon	740500 (4)	740501 (4)	310590 (4)		340521 (4)
Wear Plate, Relieved	7	4	Ceramic	740502 (4)	740503 (4)	340527 (4)		340522 (4)
Wear Plate, Relieved	7	E	Carbon 60	740504 (4)	740505 (4)	310596 (4)		340523 (4)
Wear Plate, Relieved	7	P	PEEK	740506 (4)	740507 (4)	310591 (4)		340524 (4)
Position 6 – Bearings								
Bearing	3	B	SiC		740413 (4)			
Bearing	3	E	Carbon 60		740401 (4)			
Bearing	3	P	PEEK		740414 (4)			
Position 7 – Motor Frame (Pedestal & Adapter)								
Pedestal – NEMA 56C/56HC	16	0	CI/Epoxy		SP000			
Pedestal – NEMA 143/145TC	16	1	CI/Epoxy		SP000			
Pedestal – IEC 71 - B5 Flange	16	2	CI/Epoxy		SP001			
Pedestal – IEC 80 - B5 Flange	16	3	CI/Epoxy		SP002			
Pedestal – IEC 90 - B5 Flange	16	4	CI/Epoxy		SP002			
Pedestal – NEMA 182/184TC	16	5	CI/Epoxy		SP000			
Adapter – NEMA 182/184TC	–	5	CS/Epoxy		SP0046			
Bolt, Adapter (1/2-13 x 1)	–	5	18-8 SS		641105 (4)			
Position 8 – Mag-Drive								
Magnetic-Drive (Sealless)	–	0	–		See Position 12			

1 - Flanges are ANSI 150# RF. Other flanges are available; consult factory.

2 - For NEMA motor frames.

See page 14 for Reference Drawing.

Note: All bolts are SHCS type.

Liquiflo Chemical Processing Pumps™	Max[®]-Series Gear Pumps BOM: MAG-DRIVE, CC Models M0 thru M4
---	---

Part Description	Drwg. Item #	316 Stainless Steel Construction					
		Code	Material	M0	M1	M2	M3
Position 9 – Bearing Flush Option (Front & Rear Housings)							
Front Housing, MC, Standard	8	0	316 SS			740101	
Front Housing, MC, IBF	8	2	316 SS			740103	
Rear Housing, Standard	2	0	316 SS			740200	
Rear Housing, IBF	2	2	316 SS			740210	
Position 10 – Shafts							
Drive Shaft, MC, Uncoated	20	0	316 SS			740321	740331
Drive Shaft, MC, CO-Coated	20	1	316 SS/CO			740321-CO	740331-CO
Drive Shaft, MC, TC-Coated	20	2	316 SS/TC			740321-TC	740331-TC
Idler Shaft, Uncoated	1	0	316 SS			740314	740315
Idler Shaft, CO-Coated	1	1	316 SS/CO			740314-CO	740315-CO
Idler Shaft, TC-Coated	1	2	316 SS/TC			740314-TC	740315-TC
Gear-Shaft, Drive (LH)	–	3	17-4 PHSS				X
Gear-Shaft, Idler (RH)	–	3	17-4 PHSS				X
Position 11 – O-Rings							
O-ring, Housing (2-036)	5	0	Teflon			441103 (2)	
O-ring, Containment Can (2-042)	19	0	Teflon			S4000	
O-ring, Housing (2-036)	5	V	Viton			441104 (2)	
O-ring, Containment Can (2-042)	19	V	Viton			S4002	
O-ring, Housing (2-036)	5	K	Kalrez			441106 (2)	
O-ring, Containment Can (2-042)	19	K	Kalrez			S4004	
Position 12 – Magnetic Coupling							
Inner Magnet, MCU – 1/2" Bore	11	U	316 SS/SmCo			SIMCU-04	
Outer Magnet, MCU – 5/8" Bore	10	U (Pos. 7 = 0)	CS/ SmCo			SOMCU-5	
Outer Magnet, MCU – 7/8" Bore	10	U (Pos. 7 = 1)	CS/ SmCo			SOMCU-7	
Outer Magnet, MCU – 14 mm Bore	10	U (Pos. 7 = 2)	CS/ SmCo			SOMCU-71	
Outer Magnet, MCU – 19 mm Bore	10	U (Pos. 7 = 3)	CS/ SmCo			SOMCU-80	
Outer Magnet, MCU – 24 mm Bore	10	U (Pos. 7 = 4)	CS/ SmCo			SOMCU-90	
Inner Magnet, MCB – 1/2" Bore	11	B	316 SS/SmCo			SIMCB-04	
Outer Magnet, MCB – 5/8" Bore	10	B (Pos. 7 = 0)	CS/ SmCo			SOMCB-5	
Outer Magnet, MCB – 7/8" Bore	10	B (Pos. 7 = 1)	CS/ SmCo			SOMCB-7	
Outer Magnet, MCB – 14 mm Bore	10	B (Pos. 7 = 2)	CS/ SmCo			SOMCB-71	
Outer Magnet, MCB – 19 mm Bore	10	B (Pos. 7 = 3)	CS/ SmCo			SOMCB-80	
Outer Magnet, MCB – 24 mm Bore	10	B (Pos. 7 = 4)	CS/ SmCo			SOMCB-90	
Outer Magnet, MCB – 1-1/8" Bore	10	B (Pos. 7 = 5)	CS/ SmCo			SOMCB-9	
Inner Magnet, MCV – 1/2" Bore	11	V	316 SS/SmCo			SIMCV-04	
Outer Magnet, MCV – 5/8" Bore	10	V (Pos. 7 = 0)	CS/ SmCo			SOMCV-5	
Outer Magnet, MCV – 7/8" Bore	10	V (Pos. 7 = 1)	CS/ SmCo			SOMCV-7	
Outer Magnet, MCV – 14 mm Bore	10	V (Pos. 7 = 2)	CS/ SmCo			SOMCV-71	
Outer Magnet, MCV – 19 mm Bore	10	V (Pos. 7 = 3)	CS/ SmCo			SOMCV-80	
Outer Magnet, MCV – 24 mm Bore	10	V (Pos. 7 = 4)	CS/ SmCo			SOMCV-90	
Outer Magnet, MCV – 1-1/8" Bore	10	V (Pos. 7 = 5)	CS/ SmCo			SOMCV-9	
Key, Inner Magnet	13	U, B, V	316 SS			741900	
Retaining Ring, Inner Magnet	27	U, B, V	316 SS			746702 (2)	
Suffix – Trim Options							
Temperature Trim (Gears/Bearings)	–	-8(T) ³	–				Consult Factory
Viscosity Trim (Gears)	–	-9D, -9T	–				

3 - T = Application Temperature in °F (e.g., -8(300) = Temperature Trim at 300°F).

Liquiflo Chemical Processing Pumps™	Max[®]-Series Gear Pumps BOM: SEALED, CC Models M5 thru M8
--	--

Part Description	Drwg. Item #	316 Stainless Steel Construction					
		Code	Material	M5	M6	M7	M8
Position 2 – Basic Material & Port Type (Center Housing, Pins, Coupling Parts & Hardware)							
Center Housing, NPT	20	S	316 SS	780003	780008	780013	780018
Center Housing, Flanged ¹	20	L	316 SS	780030	780040	780050	780060
Center Housing, BSPT	20	X	316 SS	780005	780010	780015	780020
Pin, Bearing Lock	25	S, L, X	Teflon	361801 (4)			
Pin, Bearing Lock (High Temperature)	25	S, L, X	316 SS	361807 (4)			
Pin, Housing Alignment	23	S, L, X	416 SS	780801 (4)			
Coupling Hub, Pump – 3/4"	29	S, L, X	Cast Iron	5288			
Coupling Spider	30	S, L, X	Hytrel	5287			
Key, Coupling (Pump Shaft)	27	S, L, X	316 SS	781910			
Bolt, Housing (5/16-18 x L) ²	4	S, L, X	18-8 SS	641109 (8)	781114 (8)	781113 (8)	781112 (8)
Bolt, Front Housing (3/8-16 x 1-5/8)	24	S, L, X	18-8 SS	781115 (4)			
Bolt, Seal Housing (1/4-28 x 5/8)	13	S, L, X	18-8 SS	785006 (4)			
Bolt, Mounting (3/8-16 x 1) ³	15	S, L, X	18-8 SS	781118 (4)			
Adapter Ring	12	S, L, X	CS/Epoxy	780800			
Tag, Rear Housing	–	S, L, X	316 SS	780810			
Rivet, Tag (#2 x 1/4)	–	S, L, X	18-8 SS	780805 (2)			
Position 3 – Drive Gear							
Gear, Drive (LH)	21	6	316 SS	780615	780613	780611	780609
Gear w/ Integral Shaft, Drive (LH)	–	9	17-4 PHSS	780322	780302	780314	780319
Gear, Drive (RH)	21	P	PEEK	780614	780612	780610	780608
Key, Gear	22	6, P	316 SS	781915	781910	781905	781900
Retaining Ring, Gear	10	6, P	316 SS	786702 (2)			
Position 4 – Idler Gear							
Gear, Idler (RH)	6	3	Teflon	780630	780631	780632	780633
Gear, Idler (RH)	6	6	316 SS	780601	780603	780605	780607
Gear w/ Integral Shaft, Idler (RH)	–	9	17-4 PHSS	780340	780350	780360	780370
Gear, Idler (RH)	6	P	PEEK	780600	780602	780604	780606
Key, Gear	22	3, 6, P	316 SS	781915	781910	781905	781900
Retaining Ring, Gear	10	3, 6, P	316 SS	786702 (2)			
Position 5 – Wear Plates							
Wear Plate, Relieved	7	3	Teflon	780501 (4)			
Wear Plate, Relieved	7	4	Ceramic	780504 (4)			
Wear Plate, Relieved	7	E	Carbon 60	780502 (4)			
Wear Plate, Relieved	7	P	PEEK	780503 (4)			
Position 6 – Bearings							
Bearing	3	B	SiC	780413 (4)			
Bearing	3	E	Carbon 60	780401 (4)			
Bearing	3	P	PEEK	780414 (4)			
Position 7 – Motor Frame (Pedestal & Mechanical Coupling)							
Pedestal – NEMA 56C/56HC (SMS)	26	0 (P. 8 = U)	CI/Epoxy	SP000			
Pedestal – NEMA 56C/56HC (DMS)	26	0 (P. 8 = F)	CI/Epoxy	SP009			
Coupling Hub, Motor – 5/8"	28	0	Cast Iron	5280			
Pedestal – NEMA 143/145TC (SMS)	26	1 (P. 8 = U)	CI/Epoxy	SP000			
Pedestal – NEMA 143/145TC (DMS)	26	1 (P. 8 = F)	CI/Epoxy	SP009			
Coupling Hub, Motor – 7/8"	28	1	Cast Iron	5281			
Pedestal – IEC 71 - B5 (SMS)	26	2 (P. 8 = U)	CI/Epoxy	SP001			
Pedestal – IEC 71 - B5 (DMS)	26	2 (P. 8 = F)	CI/Epoxy	SP010			
Coupling Hub, Motor – 14 mm	28	2	Cast Iron	5284			
Pedestal – IEC 80 - B5 (SMS)	26	3 (P. 8 = U)	CI/Epoxy	SP002			
Pedestal – IEC 80 - B5 (DMS)	26	3 (P. 8 = F)	CI/Epoxy	SP011			
Coupling Hub, Motor – 19 mm	28	3	Cast Iron	5285			

1 - Flanges are ANSI 150# RF. Other flanges are available; consult factory.
 2 - L (Length) = 2.5", 2.875", 3.25", 3.75".
 3 - For NEMA motor frames.

See page 13 for Reference Drawing.

Note: All bolts are SHCS type.

<p style="text-align: center;">Liquiflo Chemical Processing Pumps™</p>	<p style="font-size: 1.2em; font-weight: bold; color: yellow;">Max[®]-Series Gear Pumps</p> <p style="font-weight: bold; color: yellow;">BOM: SEALED, CC Models M5 thru M8</p>
---	---

Part Description	Drwg. Item #	316 Stainless Steel Construction					
		Code	Material	M5	M6	M7	M8
Position 7 – Motor Frame (Pedestal & Mechanical Coupling) [Continued]							
Pedestal – IEC 90 - B5 (SMS)	26	4 (P. 8 = U)	CI/Epoxy				SP002
Pedestal – IEC 90 - B5 (DMS)	26	4 (P. 8 = F)	CI/Epoxy				SP011
Coupling Hub, Motor – 24 mm	28	4	Cast Iron				5286
Pedestal – NEMA 182/184TC	26	5 (P. 8 = U)	CI/Epoxy				SP000
Pedestal – NEMA 182/184TC	26	5 (P. 8 = F)	CI/Epoxy				SP009
Coupling Hub, Motor – 1-1/8"	28	5	Cast Iron				5283
Adapter – NEMA 182/184TC	–	5	CS/Epoxy				SP0046
Bolt, Adapter (1/2-13 x 1)	–	5	18-8 SS				641105 (4)
Position 8 – Seal Type							
Mechanical Seal, Single	14	U	316 SS / Carbon				A-787058
Seal Seat, SMS	16	U	SiC				781547
Retaining Ring, SMS	10	U	316 SS				786702
Plug, 1/8 NPT (Socket Head)	9	U	316 SS				362308 (2)
Mechanical Seal, Double	14	F	316 SS / Carbon				A-787031
Seal Seat, DMS	16	F	SiC				781547 (2)
Seal Housing	11	U, F	316 SS				780105
Position 9 – Bearing Flush Option (Front & Rear Housings)							
Front Housing, Standard	8	0	316 SS				780100
Front Housing, IBF	8	2	316 SS				780110
Rear Housing, Standard	2	0	316 SS				780201
Rear Housing, IBF	2	2	316 SS				780210
Position 10 – Shafts							
Drive Shaft, Uncoated	19	0	316 SS	780301	780306	780311	780316
Drive Shaft, CO-Coated	19	1	316 SS/CO	780301-CO	780306-CO	780311-CO	780316-CO
Drive Shaft, TC-Coated	19	2	316 SS/TC	780301-TC	780306-TC	780311-TC	780316-TC
Idler Shaft, Uncoated	1	0	316 SS	780321	780326	780331	780336
Idler Shaft, CO-Coated	1	1	316 SS/CO	780321-CO	780326-CO	780331-CO	780336-CO
Idler Shaft, TC-Coated	1	2	316 SS/TC	780321-TC	780326-TC	780331-TC	780336-TC
Gear w/ Integral Shaft, Drive	–	3	17-4 PHSS				Position 3 = 9
Gear w/ Integral Shaft, Idler	–	3	17-4 PHSS				Position 4 = 9
Position 11 – O-Rings							
O-ring, Housing ⁴	5	0	Teflon				781101 (2)
O-ring, Seal Housing (2-030)	18	0	Teflon				3121560 (1)
O-ring, S. Seat, SMS (2-216)	17	0	Viton				781691 (1)
O-ring, S. Seat, DMS (2-216)	17	0	Viton				781691 (2)
O-ring, Housing ⁴	5	V	Viton				781102 (2)
O-ring, Seal Housing (2-030)	18	V	Viton				3121561 (1)
O-ring, S. Seat, SMS (2-216)	17	V	Viton				781691 (1)
O-ring, S. Seat, DMS (2-216)	17	V	Viton				781691 (2)
O-ring, Housing ⁴	5	T	Teflon				781101 (2)
O-ring, Seal Housing (2-030)	18	T	Teflon				3121560 (1)
O-ring, S. Seat, SMS (2-216)	17	T	Kalrez				781694 (1)
O-ring, S. Seat, DMS (2-216)	17	T	Kalrez				781694 (2)
O-ring, Housing ⁴	5	K	Kalrez				781104 (2)
O-ring, Seal Housing (2-030)	18	K	Kalrez				3121564 (1)
O-ring, S. Seat, SMS (2-216)	17	K	Kalrez				781694 (1)
O-ring, S. Seat, DMS (2-216)	17	K	Kalrez				781694 (2)
Suffix – Trim Options							
Temperature Trim (Gears/Bearings)	–	-8(T) ⁵	–				Consult Factory
Viscosity Trim (Gears)	–	-9D, -9T	–				

4 - Size: 3.420" Inner Diameter x .070" Cross-Sectional Diameter.
 5 - T = Application Temperature in °F (e.g., -8(300) = Temperature Trim at 300°F).

Liquiflo Chemical Processing Pumps™	Max[®]-Series Gear Pumps BOM: MAG-DRIVE, CC Models M5 thru M8
--	---

Part Description	Drwg. Item #	316 Stainless Steel Construction					
		Code	Material	M5	M6	M7	M8
Position 2 – Basic Material & Port Type (Center Housing, C. Can, Pins & Hardware)							
Center Housing, NPT	21	S	316 SS	780003	780008	780013	780018
Center Housing, Flanged ¹	21	L	316 SS	780030	780040	780050	780060
Center Housing, BSPT	21	X	316 SS	780005	780010	780015	780020
Containment Can	12	S, L, X	316 SS	740913			
Pin, Bearing Lock	28	S, L, X	Teflon	361801 (4)			
Pin, Bearing Lock (High Temperature)	28	S, L, X	316 SS	361807 (4)			
Pin, Housing Alignment	24	S, L, X	416 SS	780801 (4)			
Bolt, Housing (5/16-18 x L) ²	4	S, L, X	18-8 SS	641109 (8)	781114 (8)	781113 (8)	781112 (8)
Bolt, Front Housing (3/8-16 x 1-1/2)	26	S, L, X	18-8 SS	781117 (4)			
Nut, Front Housing (3/8-16)	25	S, L, X	18-8 SS	S1003 (4)			
Lockwasher, Front Housing (3/8)	29	S, L, X	18-8 SS	S1004 (4)			
Bolt, Cont. Can (5/16-24 x 1/2)	18	S, L, X	18-8 SS	864007 (6)			
Bolt, Mounting (3/8-16 x 1) ³	15	S, L, X	18-8 SS	781118 (4)			
Tag, Rear Housing	–	S, L, X	316 SS	780810			
Rivet, Tag (#2 x 1/4)	–	S, L, X	18-8 SS	780805 (2)			
Position 3 – Drive Gear							
Gear, Drive (LH)	22	6	316 SS	780615	780613	780611	780609
Gear w/ Integral Shaft, Drive (LH)	–	9	17-4 PHSS	X	X	X	X
Gear, Drive (RH)	22	P	PEEK	780614	780612	780610	780608
Key, Gear	23	6, P	316 SS	781915	781910	781905	781900
Retaining Ring, Gear	27	6, P	316 SS	786702 (2)			
Position 4 – Idler Gear							
Gear, Idler (RH)	6	3	Teflon	780630	780631	780632	780633
Gear, Idler (LH)	6	6	316 SS	780601	780603	780605	780607
Gear w/ Integral Shaft, Idler (RH)	–	9	17-4 PHSS	X	X	X	X
Gear, Idler (LH)	6	P	PEEK	780600	780602	780604	780606
Key, Gear	23	3, 6, P	316 SS	781915	781910	781905	781900
Retaining Ring, Gear	27	3, 6, P	316 SS	786702 (2)			
Position 5 – Wear Plates							
Wear Plate, Relieved	7	3	Teflon	780501 (4)			
Wear Plate, Relieved	7	4	Ceramic	780504 (4)			
Wear Plate, Relieved	7	E	Carbon 60	780502 (4)			
Wear Plate, Relieved	7	P	PEEK	780503 (4)			
Position 6 – Bearings							
Bearing	3	B	SiC	780413 (4)			
Bearing	3	E	Carbon 60	780401 (4)			
Bearing	3	P	PEEK	780414 (4)			
Position 7 – Motor Frame (Pedestal & Adapter)							
Pedestal – NEMA 56C/56HC	16	0	CI/Epoxy	SP000			
Pedestal – NEMA 143/145TC	16	1	CI/Epoxy	SP000			
Pedestal – IEC 71 - B5 Flange	16	2	CI/Epoxy	SP001			
Pedestal – IEC 80 - B5 Flange	16	3	CI/Epoxy	SP002			
Pedestal – IEC 90 - B5 Flange	16	4	CI/Epoxy	SP002			
Pedestal – NEMA 182/184TC	16	5	CI/Epoxy	SP000			
Adapter Plate – NEMA 182/184TC	–	5	CS/Epoxy	SP0046			
Bolt, Adapter (1/2-13 x 1)	–	5	18-8 SS	641105 (4)			
Position 8 – Mag-Drive							
Magnetic-Drive (Sealless)	–	0	–	See Position 12			

1 - Flanges are ANSI 150# RF. Other flanges are available; consult factory.

2 - L (Length) = 2.5", 2.875", 3.25", 3.75".

3 - For NEMA motor frames.

Note: All bolts are SHCS type.

See page 14 for Reference Drawing.

Liquiflo Chemical Processing Pumps™	Max[®]-Series Gear Pumps BOM: MAG-DRIVE, CC Models M5 thru M8
---	---

Part Description	Drwg. Item #	316 Stainless Steel Construction					
		Code	Material	M5	M6	M7	M8
Position 9 – Bearing Flush Option (Front & Rear Housings)							
Front Housing, MC, Standard	8	0	316 SS				780101
Front Housing, MC, IBF	8	2	316 SS				780103
Rear Housing, Standard	2	0	316 SS				780201
Rear Housing, IBF	2	2	316 SS				780210
Position 10 – Shafts							
Drive Shaft, MC, Uncoated	20	0	316 SS	780341	780346	780351	780356
Drive Shaft, MC, CO-Coated	20	1	316 SS/CO	780341-CO	780346-CO	780351-CO	780356-CO
Drive Shaft, MC, TC-Coated	20	2	316 SS/TC	780341-TC	780346-TC	780351-TC	780356-TC
Idler Shaft, Uncoated	1	0	316 SS	780321	780326	780331	780336
Idler Shaft, CO-Coated	1	1	316 SS/CO	780321-CO	780326-CO	780331-CO	780336-CO
Idler Shaft, TC-Coated	1	2	316 SS/TC	780321-TC	780326-TC	780331-TC	780336-TC
Gear w/ Integral Shaft, Drive	–	3	17-4 PHSS				X
Gear w/ Integral Shaft, Idler	–	3	17-4 PHSS				X
Position 11 – O-Rings							
O-ring, Housing ⁴	5	0	Teflon				781101 (2)
O-ring, Cont. Can (2-042)	19	0	Teflon				S4000
O-ring, Housing ⁴	5	V	Viton				781102 (2)
O-ring, Cont. Can (2-042)	19	V	Viton				S4002
O-ring, Housing ⁴	5	K	Kalrez				781104 (2)
O-ring, Cont. Can (2-042)	19	K	Kalrez				S4004
Position 12 – Magnetic Coupling							
Inner Magnet, MCB – 5/8"	11	B	316 SS/SmCo				SIMCB-05
Outer Magnet, MCB – 5/8"	10	B (P. 7 = 0)	CS/ SmCo				SOMCB-5
Outer Magnet, MCB – 7/8"	10	B (P. 7 = 1)	CS/ SmCo				SOMCB-7
Outer Magnet, MCB – 14 mm	10	B (P. 7 = 2)	CS/ SmCo				SOMCB-71
Outer Magnet, MCB – 19 mm	10	B (P. 7 = 3)	CS/ SmCo				SOMCB-80
Outer Magnet, MCB – 24 mm	10	B (P. 7 = 4)	CS/ SmCo				SOMCB-90
Outer Magnet, MCB – 1-1/8"	10	B (P. 7 = 5)	CS/ SmCo				SOMCB-9
Inner Magnet, MCV – 5/8"	11	V	316 SS/SmCo				SIMCV-05
Outer Magnet, MCV – 5/8"	10	V (P. 7 = 0)	CS/ SmCo				SOMCV-5
Outer Magnet, MCV – 7/8"	10	V (P. 7 = 1)	CS/ SmCo				SOMCV-7
Outer Magnet, MCV – 14 mm	10	V (P. 7 = 2)	CS/ SmCo				SOMCV-71
Outer Magnet, MCV – 19 mm	10	V (P. 7 = 3)	CS/ SmCo				SOMCV-80
Outer Magnet, MCV – 24 mm	10	V (P. 7 = 4)	CS/ SmCo				SOMCV-90
Outer Magnet, MCV – 1-1/8"	10	V (P. 7 = 5)	CS/ SmCo				SOMCV-9
Key, Inner Magnet	13	B, V	316 SS				781920
Retaining Ring, Inner Magnet	27	B, V	316 SS				780702 (2)
Suffix – Trim Options							
Temperature Trim (Gears/Bearings)	–	-8(T) ⁵	–				Consult Factory
Viscosity Trim (Gears)	–	-9D, -9T	–				

4 - Size: 3.420" Inner Diameter x .070" Cross-Sectional Diameter.

5 - T = Application Temperature in °F (e.g., -8(300) = Temperature Trim at 300°F).

Liquiflo Chemical Processing Pumps™	Max[®]-Series Gear Pumps BOM: MAG-DRIVE, CC Models M4, M6 & M8
---	--

Part Description	Drwg. Item #	Titanium Construction				
		Code	Material	M4	M6	M8
Position 2 – Basic Material & Port Type (Center Housing, C. Can, Pins & Hardware)						
Center Housing, NPT	21	T	Titanium	740003	780009	X
Center Housing, Flanged ¹	21	R	Titanium	740014	780041	780061
Center Housing, BSPT	21	Z	Titanium	740024	780011	X
Containment Can	12	T, R, Z	Alloy-C/Tefzel	740914		
Pin, Bearing Lock	28	T, R, Z	Teflon	361801 (4)		
Pin, Bearing Lock (High Temperature)	28	T, R, Z	Titanium	361809 (4)		
Pin, Housing Alignment	24	T, R, Z	416 SS	780801 (4)		
Bolt, Housing (5/16-18 x L) ²	4	T, R, Z	18-8 SS	641109 (4)	781114 (8)	781112 (8)
Bolt, Front Housing (3/8-16 x 1-1/4)	26	T, R, Z	18-8 SS	742002 (4)	X	X
Bolt, Front Housing (3/8-16 x 1-1/2)	26	T, R, Z	18-8 SS	X	781117 (4)	
Nut, Front Housing (3/8-16)	25	T, R, Z	18-8 SS	S1003 (4)		
Lockwasher, Front Housing (3/8)	29	T, R, Z	18-8 SS	S1004 (4)		
Bolt, Cont. Can (5/16-24 x 1/2)	18	T, R, Z	18-8 SS	864007 (6)		
Bolt, Mounting (3/8-16 x 1) ³	15	T, R, Z	18-8 SS	781118 (4)		
Tag, Rear Housing	–	T, R, Z	316 SS	780810		
Rivet, Tag (#2 x 1/4)	–	T, R, Z	18-8 SS	780805 (2)		
Position 3 – Drive Gear						
Gear, Drive (LH)	22	4	Titanium	740624	780617	780619
Gear, Drive (LH)	22	P	PEEK	740621	780612	780608
Key, Gear	23	4, P	Titanium	741901	781911	781901
Retaining Ring, Gear	27	4, P	Titanium	746703 (2)	786703 (2)	
Position 4 – Idler Gear						
Gear, Idler (RH)	6	3	Teflon	740619	780631	780633
Gear, Idler (RH)	6	P	PEEK	740617	780602	780606
Key, Gear	23	3, P	Titanium	741901	781911	781901
Retaining Ring, Gear	27	3, P	Titanium	746703 (2)	786703 (2)	
Position 5 – Wear Plates						
Wear Plate, Relieved	7	3	Teflon	340521 (4)	780501 (4)	
Wear Plate, Relieved	7	4	Ceramic	340522 (4)	780504 (4)	
Wear Plate, Relieved	7	E	Carbon 60	340523 (4)	780502 (4)	
Wear Plate, Relieved	7	P	PEEK	340524 (4)	780503 (4)	
Position 6 – Bearings						
Bearing	3	B	SiC	740413 (4)	780413 (4)	
Bearing	3	E	Carbon 60	740401 (4)	780401 (4)	
Bearing	3	P	PEEK	740414 (4)	780414 (4)	
Position 7 – Motor Frame (Pedestal & Adapter)						
Pedestal – NEMA 56C/56HC	16	0	Cl/Epoxy	SP000		
Pedestal – NEMA 143/145TC	16	1	Cl/Epoxy	SP000		
Pedestal – IEC 71 - B5 Flange	16	2	Cl/Epoxy	SP001		
Pedestal – IEC 80 - B5 Flange	16	3	Cl/Epoxy	SP002		
Pedestal – IEC 90 - B5 Flange	16	4	Cl/Epoxy	SP002		
Pedestal – NEMA 182/184TC	16	5	Cl/Epoxy	SP000		
Adapter Plate – NEMA 182/184TC	–	5	CS/Epoxy	SP0046		
Bolt, Adapter (1/2-13 x 1)	–	5	18-8 SS	641105 (4)		
Position 8 – Mag-Drive						
Magnetic-Drive (Sealless)	–	0	–	See Position 12		

1 - Flanges are ANSI 150# RF. Other flanges are available; consult factory.

2 - L (Length) = 2.5", 2.875", 3.75".

3 - For NEMA motor frames.

Note: All bolts are SHCS type.

See page 14 for Reference Drawing.

Liquiflo Chemical Processing Pumps™	Max[®]-Series Gear Pumps BOM: MAG-DRIVE, CC Models M4, M6 & M8
---	--

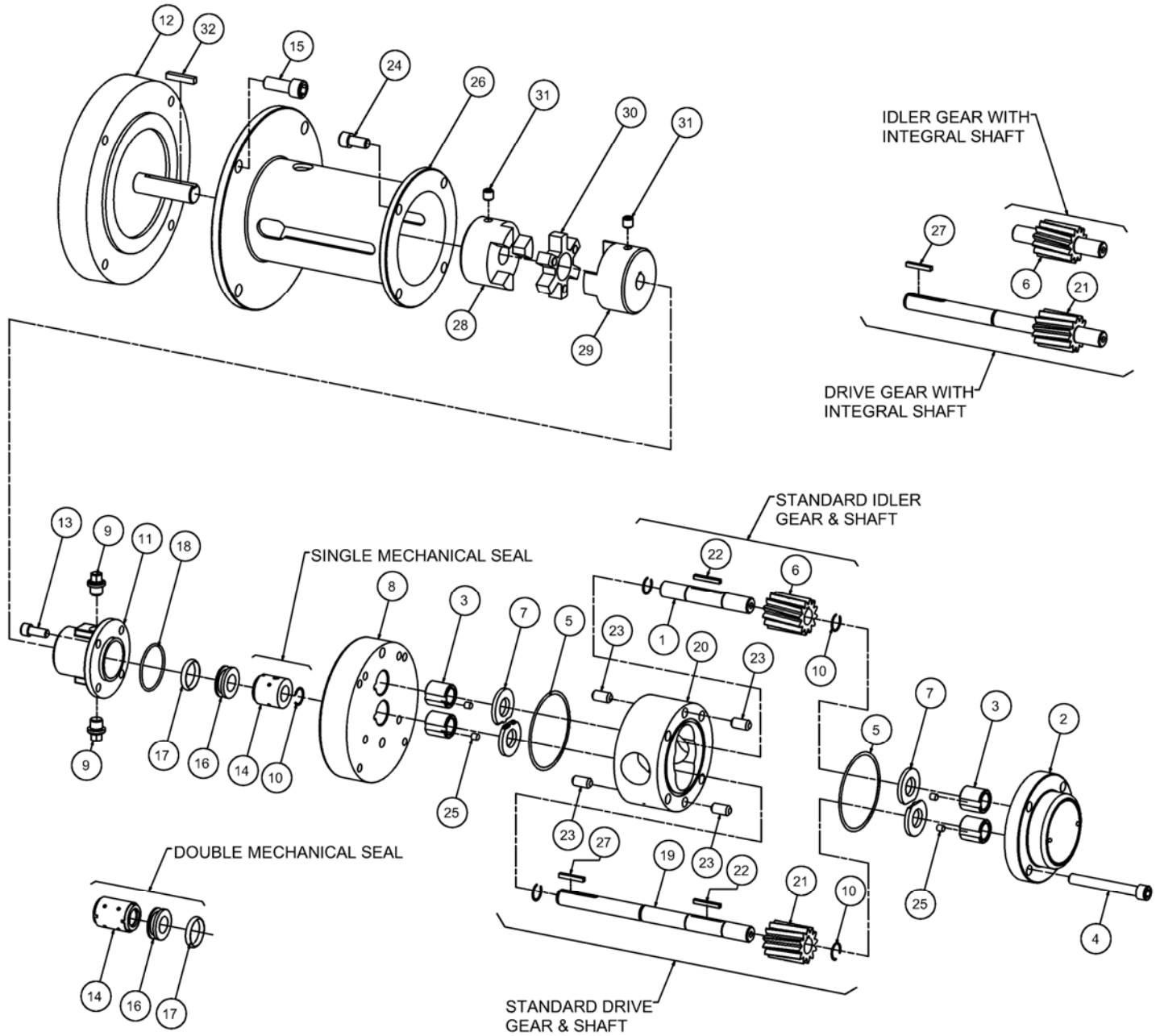
Part Description	Drwg. Item #	Titanium Construction				
		Code	Material	M4	M6	M8
Position 9 – Bearing Flush Option (Front & Rear Housings)						
Front Housing, MC, Standard	8	0	Titanium	740107	780102	
Front Housing, MC, IBF	8	2	Titanium	740104	780104	
Rear Housing, Standard	2	0	Titanium	740201	780202	
Rear Housing, IBF	2	2	Titanium	740211	780211	
Position 10 – Shafts						
Drive Shaft, MC, TO-Coated	20	4	Titanium/TO	740340-TO	780347-TO 780357-TO	
Idler Shaft, TO-Coated	1	4	Titanium/TO	740316-TO	780329-TO 780337-TO	
Position 11 – O-Rings						
O-ring, Housing ⁴	5	0	Teflon	441103 (2)	781101 (2)	
O-ring, Containment Can (2-042)	19	0	Teflon	S4000		
O-ring, Housing ⁴	5	V	Viton	441104 (2)	781102 (2)	
O-ring, Containment Can (2-042)	19	V	Viton	S4002		
O-ring, Housing ⁴	5	K	Kalrez	441106 (2)	781104 (2)	
O-ring, Containment Can (2-042)	19	K	Kalrez	S4004		
Position 12 – Magnetic Coupling						
Inner Magnet, MCB – 1/2"/5/8" Bore	11	B	Ti/SmCo	SIMCB-24	SIMCB-25	
Outer Magnet, MCB – 5/8" Bore	10	B (Pos. 7 = 0)	CS/ SmCo	SOMCB-5		
Outer Magnet, MCB – 7/8" Bore	10	B (Pos. 7 = 1)	CS/ SmCo	SOMCB-7		
Outer Magnet, MCB – 14 mm Bore	10	B (Pos. 7 = 2)	CS/ SmCo	SOMCB-71		
Outer Magnet, MCB – 19 mm Bore	10	B (Pos. 7 = 3)	CS/ SmCo	SOMCB-80		
Outer Magnet, MCB – 24 mm Bore	10	B (Pos. 7 = 4)	CS/ SmCo	SOMCB-90		
Outer Magnet, MCB – 1-1/8" Bore	10	B (Pos. 7 = 5)	CS/ SmCo	SOMCB-9		
Inner Magnet, MCV – 1/2"/5/8" Bore	11	V	Ti/SmCo	SIMCV-24	SIMCV-25	
Outer Magnet, MCV – 5/8" Bore	10	V (Pos. 7 = 0)	CS/ SmCo	SOMCV-5		
Outer Magnet, MCV – 7/8" Bore	10	V (Pos. 7 = 1)	CS/ SmCo	SOMCV-7		
Outer Magnet, MCV – 14 mm Bore	10	V (Pos. 7 = 2)	CS/ SmCo	SOMCV-71		
Outer Magnet, MCV – 19 mm Bore	10	V (Pos. 7 = 3)	CS/ SmCo	SOMCV-80		
Outer Magnet, MCV – 24 mm Bore	10	V (Pos. 7 = 4)	CS/ SmCo	SOMCV-90		
Outer Magnet, MCV – 1-1/8" Bore	10	V (Pos. 7 = 5)	CS/ SmCo	SOMCV-9		
Key, Inner Magnet	13	B, V	Titanium	741901	781921	
Retaining Ring, Inner Magnet	27	B, V	Titanium	746703 (2)	780703 (2)	
Suffix – Trim Options						
Temperature Trim (Gears/Bearings)	–	-8(T) ⁵	–	Consult Factory		
Viscosity Trim (Gears)	–	-9D, -9T	–			

4 - M4 Size: 2-036; M6 & M8 Size: 3.420" Inner Diameter x .070" Cross-Sectional Diameter.

5 - T = Application Temperature in °F (e.g., -8(300) = Temperature Trim at 300°F).

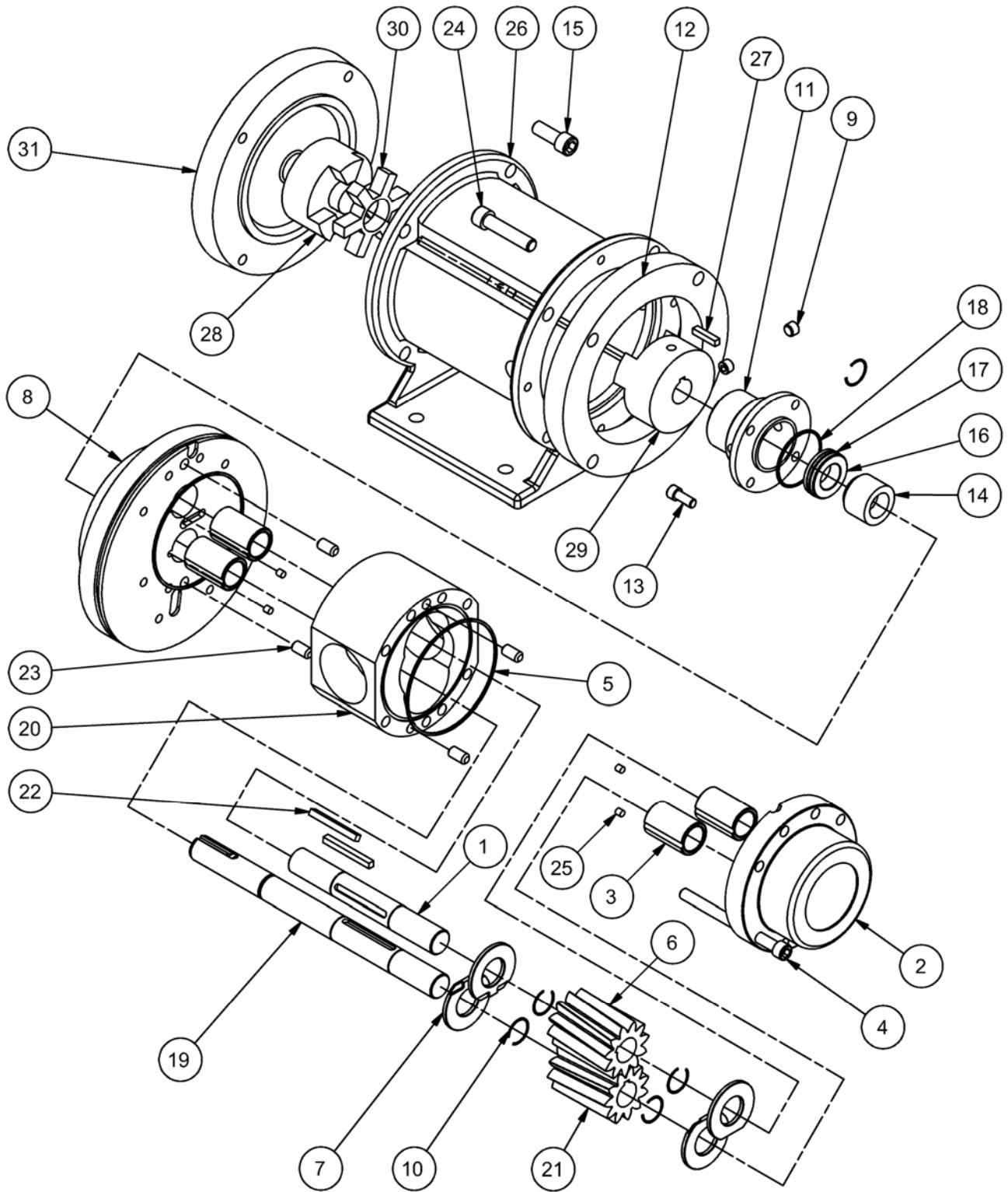
Appendix 1: Exploded View Reference Drawings

Models M0-M4 – SEALED, Close-Coupled



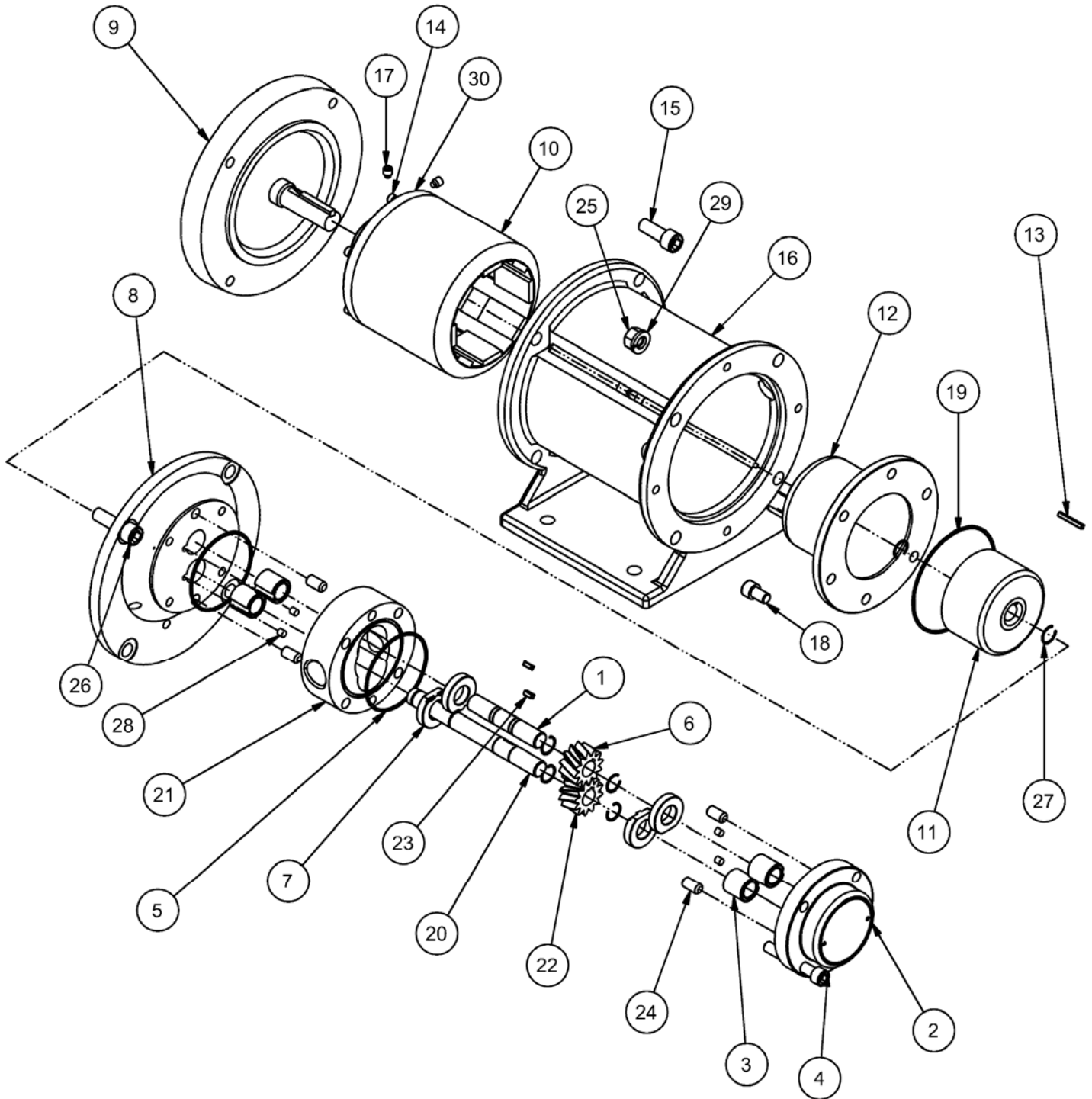
Appendix 1: Exploded View Reference Drawings (continued)

Models M5-M8 – SEALED, Close-Coupled



Appendix 1: Exploded View Reference Drawings (continued)

Models M0-M8 – MAG-DRIVE, Close-Coupled



Appendix 2: Meaning of Abbreviated Terms

Term	Meaning	Notes
ANSI	American National Standards Institute	e.g., ANSI 150# flanges
BSPT	British Standard Pipe Threads	Type of threaded port
CC	Close-Coupled	Method of pump-motor coupling
CI	Cast Iron	Pedestal structural material
CO	Chrome Oxide	Shaft coating material
Cont. Can	Containment Can	Part of Mag-drive pump
CS	Carbon Steel	Outer magnet and adapter structural material
DMS	Double Mechanical Seal	Internally mounted double seal
Drwg.	Drawing (Item #)	See corresponding exploded view reference drawing
IBF	Internal Bearing Flush	Housing option for Max-Series pumps
LH	Left Hand (helix)	Max-Series drive gear type
MC	Magnetically Coupled	Mag-drive pump
NPT	National Pipe Threads	Type of threaded port
P. or Pos.	Position (#)	Position number of model code
PEEK	Poly-Ether-Ether-Ketone (plastic)	Bearing Grade PEEK; material option for gears, bearings & wear plates
PHSS	Precipitate Hardened Stainless Steel	e.g., 17-4 PHSS
RF	Raised Face	Type of flange
RH	Right Hand (helix)	Max-Series idler gear type
SHCS	Socket Head Cap Screw	Type of bolt
SiC	Silicon Carbide	Bearing and seal seat material
SmCo	Samarium Cobalt	Inner and outer magnet material
SMS	Single Mechanical Seal	Internally mounted single seal
SS	Stainless Steel	e.g., 316 SS, 416 SS, 18-8 SS
TC	Tungsten Carbide	Shaft coating material
Ti	Titanium	Pump basic material of construction
TO	Titanium Oxide	Shaft coating material; TiO ₂
X	Not Available or Not Applicable	Used in lieu of Part Number
#	Number or Pound	e.g., Position #, Part #, 150# flanges, etc.