

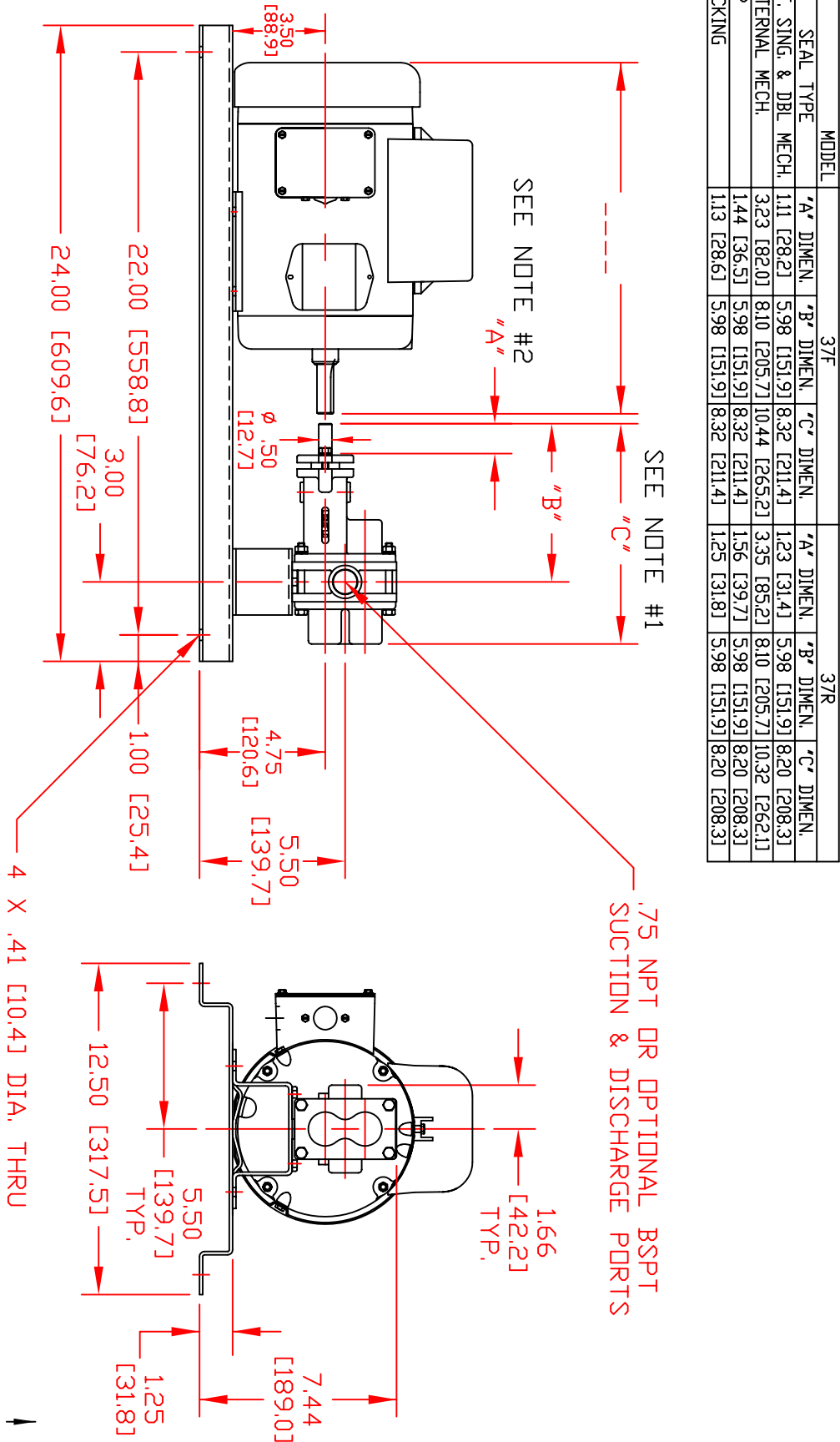


LIQUIFLO EQUIPMENT CO.
GARWOOD, N.J. 07027

MODEL: 37F & 37R SEALED GEAR PUMP,
BASE ASSEMBLED

SERIES
3

	37F			37R		
SEAL TYPE	"A" DIMEN.	"B" DIMEN.	"C" DIMEN.	"A" DIMEN.	"B" DIMEN.	"C" DIMEN.
INT. SING. & DBL MECH.	1.11 [28.2]	5.98 [151.9]	8.32 [211.4]	1.23 [31.4]	5.98 [151.9]	8.20 [208.3]
EXTERNAL MECH.	3.23 [82.0]	8.10 [205.7]	10.44 [265.2]	3.35 [85.2]	8.10 [205.7]	10.32 [262.1]
LIP	1.44 [36.5]	5.98 [151.9]	8.32 [211.4]	1.56 [39.7]	5.98 [151.9]	8.20 [208.3]
PACKING	1.13 [28.6]	5.98 [151.9]	8.32 [211.4]	1.25 [31.8]	5.98 [151.9]	8.20 [208.3]



- NOTES:
- 1) ADD .31 [7.9] FOR BEARING FLUSH PLUGS.
 - 2) .031 [8] BETWEEN COUPLING & GLAND PLATE.

