

SERIES

H-Series
3-Series

MODEL

H9F
39F

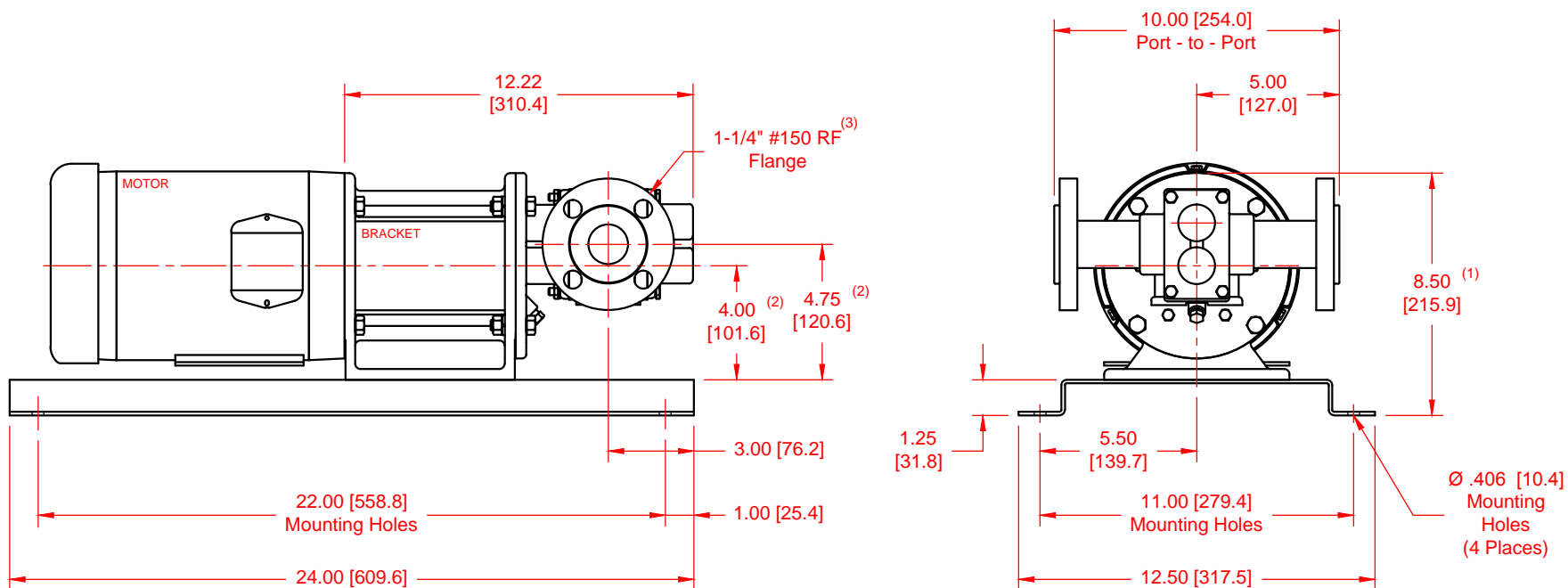
CONFIGURATION

Sealed or Mag-Drive Gear Pump
Close-Coupled Base-Mounted Version
with RF Flanges.

SEAL TYPE

Single Mechanical Seal, Double Mechanical Seal, Packing
or Mag-Drive (Sealless)

UNITS: inches [mm]



NOTES:

- 1) Dimension to top of Bracket.
- 2) Applies for NEMA 56C, 143TC, 145TC & IEC 71-B5 Motors.
- 3) Also available with ANSI 1-1/4" #300 RF and DN32 PN 16 flanges.