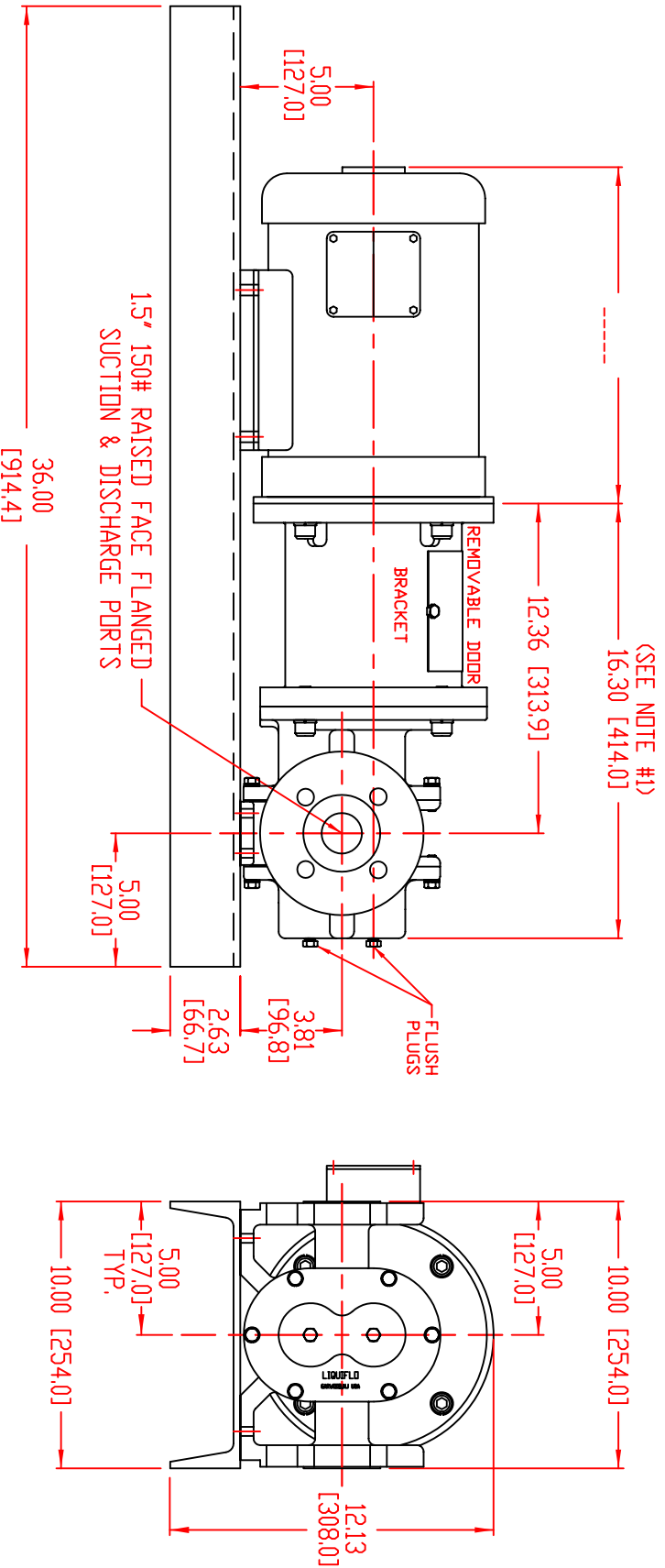




LIQUIFLO EQUIPMENT CO.
GARWOOD, N.J. 07027

MODEL: H12F/H12R SEALED GEAR PUMP, CLOSE-COUPLED,
BASE ASSEMBLED, FLANGED PORTS
DWG. NO. 20162 REV. ---

SERIES
H



NOTES:
1) ADD .31 [7.91] FOR BEARING FLUSH PLUGS.

