

SERIES

H-Series

MODEL

H12R or H12F

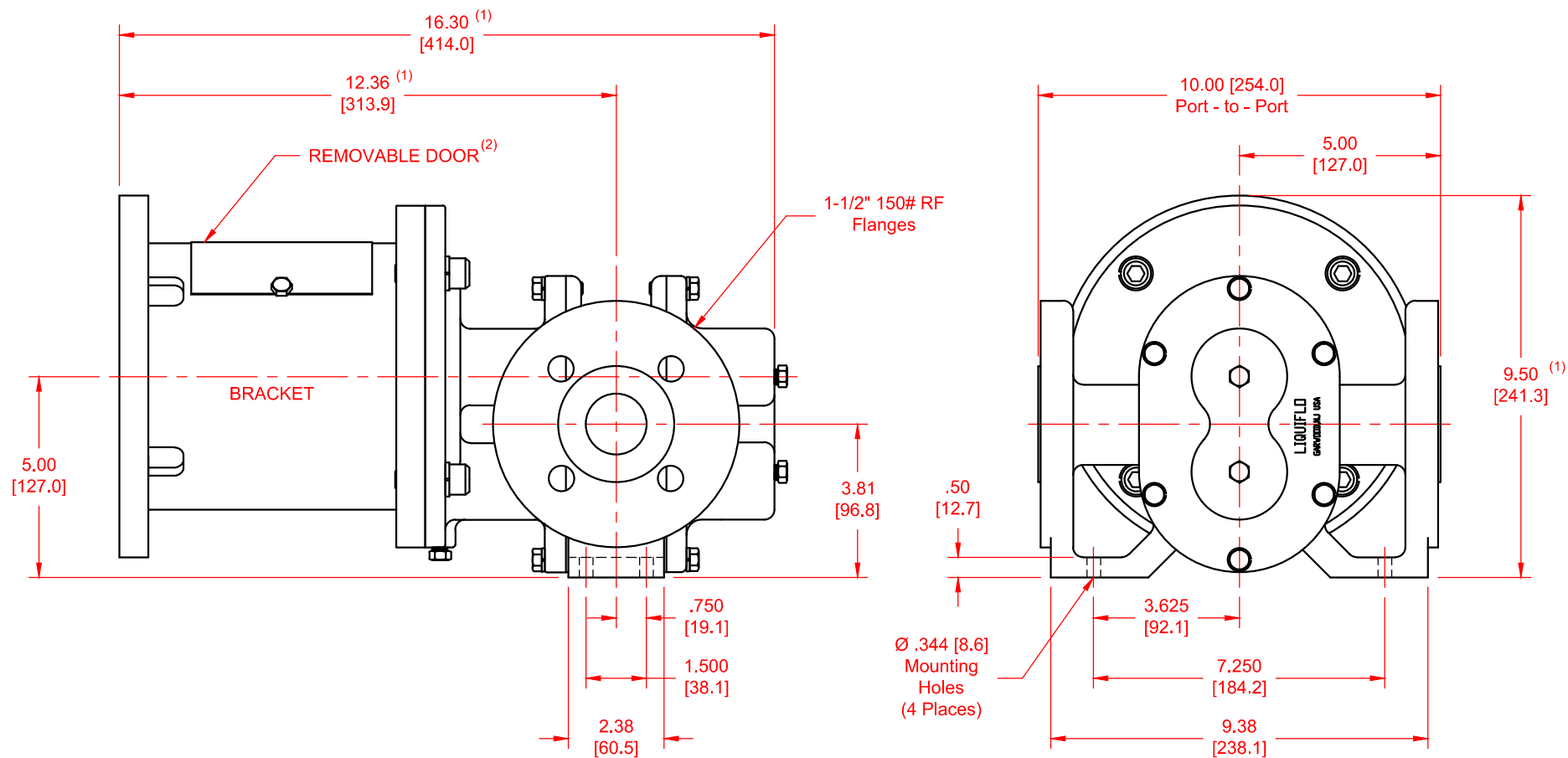
CONFIGURATION

Sealed or Mag-Drive Gear Pump  
Close-Coupled Version  
with ANSI Flanges

SEAL TYPE

Single or Double Mechanical Seal  
or Mag-Drive (Sealless)

UNITS: inches [mm]



NOTES:

1) Applies for NEMA 182/184TC & 213/215TC motors.

2) Enables access to mechanical coupling; not applicable for Mag-drive pumps.

DWG. NO. 20161 REV. C