



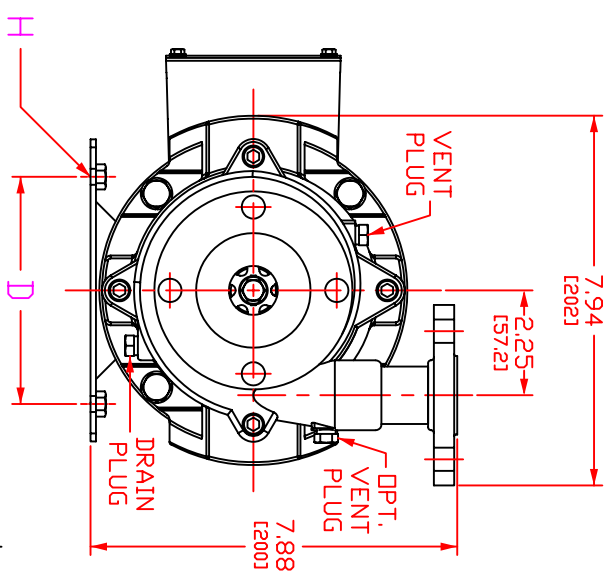
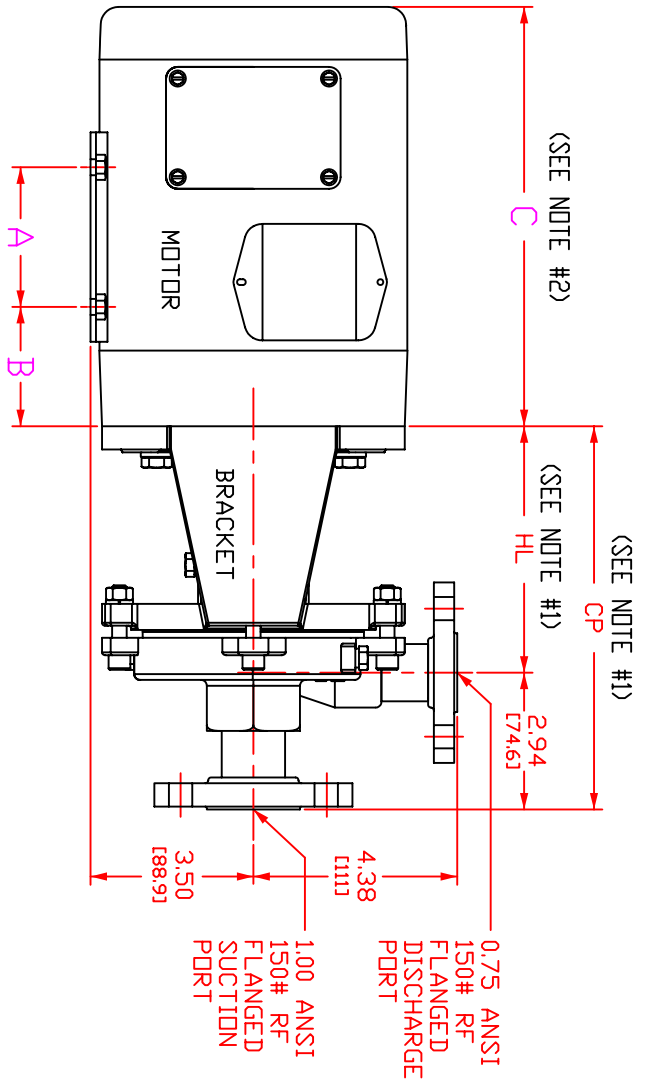
LIQUIFLO EQUIPMENT CO.
GARWOOD, N.J. 07027

MODEL: 620 SEALED CENTRIFUGAL PUMP,
CLOSE-COUPLED, FLANGED PORTS
DWG. NO. 20681 REV. ----

SERIES
CENTRY

MOTOR FRAME	DIMENSION		
	A	B	D
NEMA 56C	3.00 [76.2]	2.56 [65.1]	4.87 [124]
NEMA 56HC	5.00 [127]	2.56 [65.1]	4.87 [124]
NEMA 143TC	4.00 [102]	2.87 [73.0]	5.50 [140]
NEMA 145TC	5.00 [127]	2.87 [73.0]	5.50 [140]

SEAL TYPE	DIMENSION	
	CP	HL
SINGLE INT. MECH.	8.23 [209]	5.29 [134]
DOUBLE MECH.	9.94 [252]	7.00 [178]
PACKING	9.94 [252]	7.00 [178]



NOTES:
1) 'CP' & 'HL' DIMENSIONS INCLUDE 1.71 [43.4] WIDE SPACER PLATE (NOT SHOWN) FOR PUMP WITH DOUBLE MECH. SEAL OR PACKING.
2) SEE DATA FROM MOTOR MANUFACTURER FOR 'C' DIMENSION.

