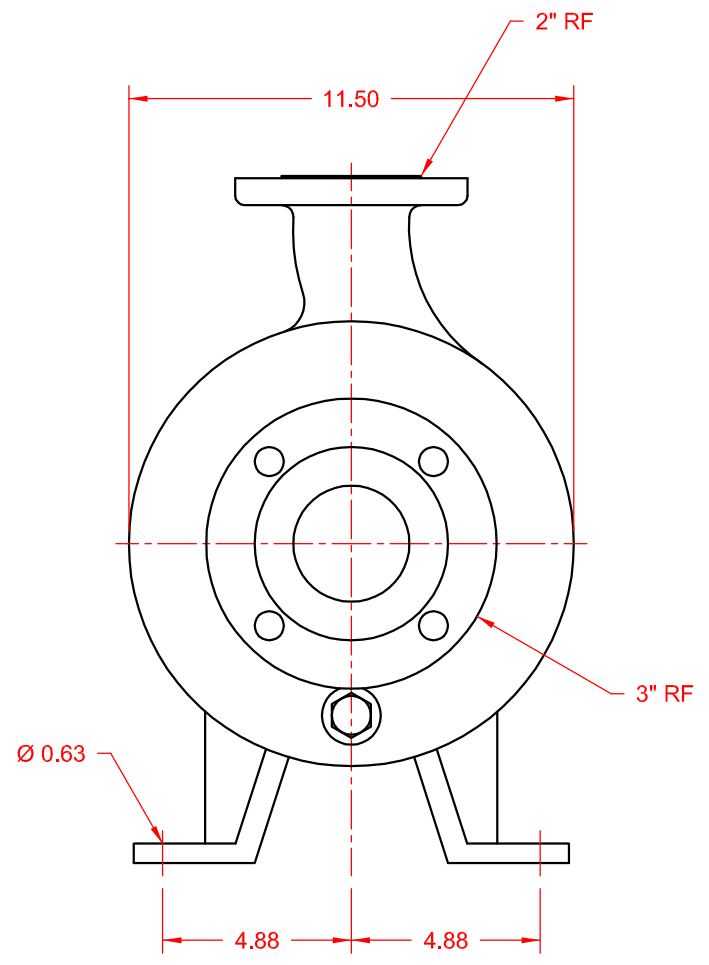
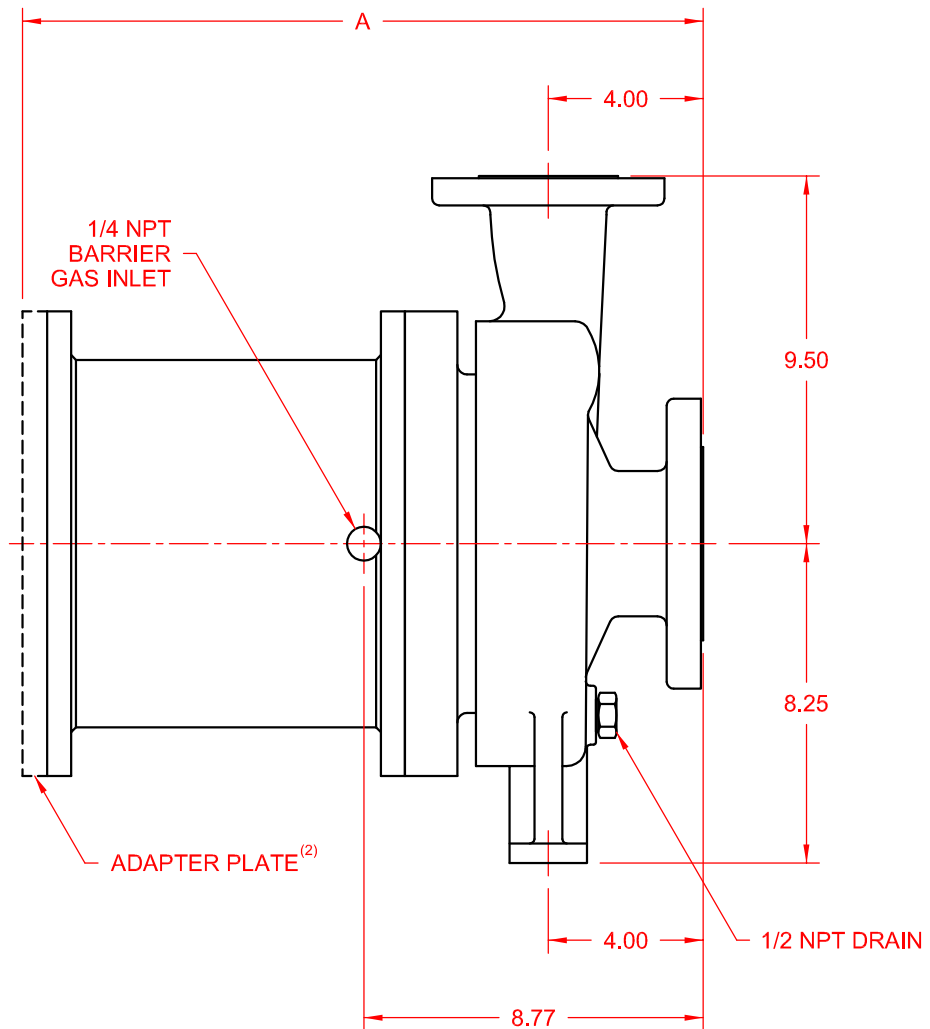


SERIES	GROUP	CONFIGURATION
ENDURA	II	ANSI Centrifugal Pump Air Barrier Mag-Drive, Close-Coupled Version

UNITS: inches

CASING SIZE	MOTOR FRAME													
	POWER FRAME	182/184TC	213/215TC	254/256TC	284/286TC	324/326TC	364/365TC	284/286TSC	324/326TSC	364/365TSC	IEC 132	IEC 160	IEC 180	IEC 200
3 x 2 x 8	A	A	A	A	A	A	A	A	A	A	A	A	A	A
	16.95	17.59	18.09	18.72	19.36	19.98	20.59	17.98	18.49	18.49	18.00	19.18	19.18	19.18



NOTES:  
 1) Pump requires motor with feet.  
 2) Adapter Plate applies to all assemblies except Power Frame.