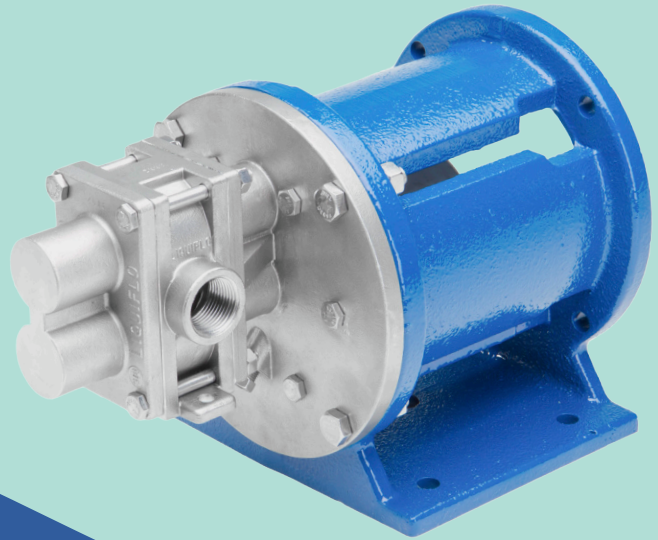


Port Options

Available for H & 3 Series Gear Pumps



We'll Help You Stay Connected

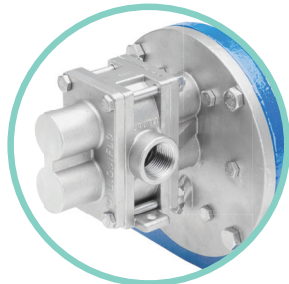
PORT OPTIONS

NPT and BSPT are the most common configurations. ANSI 150# and DIN PN16 Flanges are also available from stock. For ANSI 300#, Tri-Clamp or other special configurations, consult the factory.

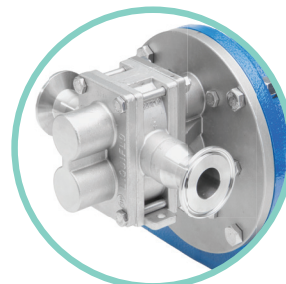
THE MODEL CODE

Model Code Position 3 denotes the basic material of construction as well as the port type.

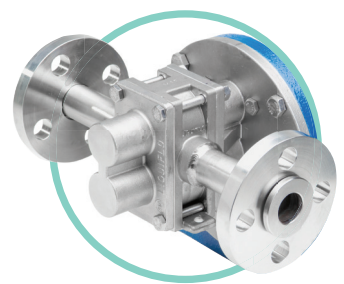
- S = 316 SS, NPT
- X = 316 SS, BSPT
- L = 316 SS, Flanged ANSI 150#
- K = 316 SS, Flanged ANSI 300#
- E = 316 SS, Flanged, DIN PN16
- N = 316 SS, Tri-Clamp
- H = Alloy-C, NPT
- Y = Alloy-C, BSPT
- C = Alloy-C, Flanged ANSI 150#
- M = Alloy-C, Flanged ANSI 300#
- F = Alloy-C, Flanged, DIN PN16



THREADED
NPT & BSPT



TRI-CLAMP CONNECTIONS



RAISED-FACE FLANGES
ANSI & DIN

Pump Model	Threaded NPT or BSPT	Flanged ANSI 150# or 300#	Flanged DIN PN16	Tri-Clamp	
				Nominal	Actual OD
H1F, H3F & 31F, 33F	1/4	1/2	10	1/2	0.984"
H5R, H5F & 35R, 35F	1/2	1/2	15	3/4	0.984"
H7N, H7R, H7F & 37R, 37F	3/4	3/4	20	1	1.984"
H9R & 39R	1	1	25	1-1/2	1.984"
H9F & 39F	1-1/4	1-1/4	32	1-1/2	1.984"
H12R, H12F & 312R, 312F	1-1/4	1-1/2	40	N/A	N/A
H14F & 314F	N/A	2-1/2	65	N/A	N/A