

SERIES

MODEL

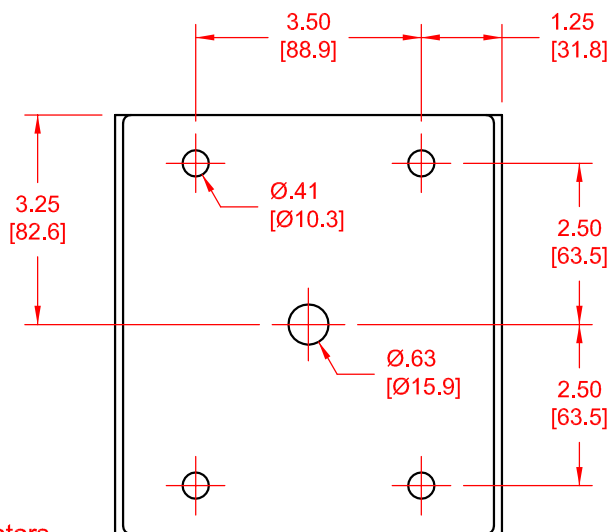
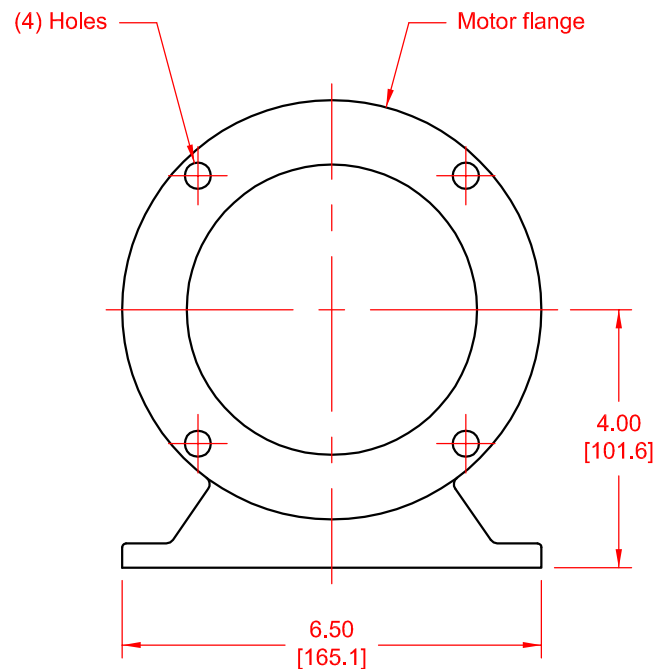
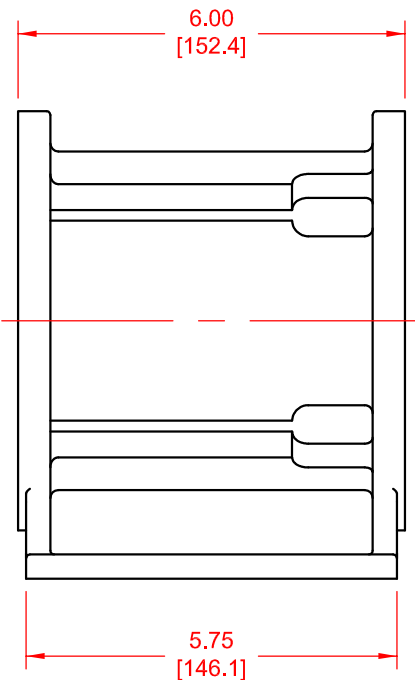
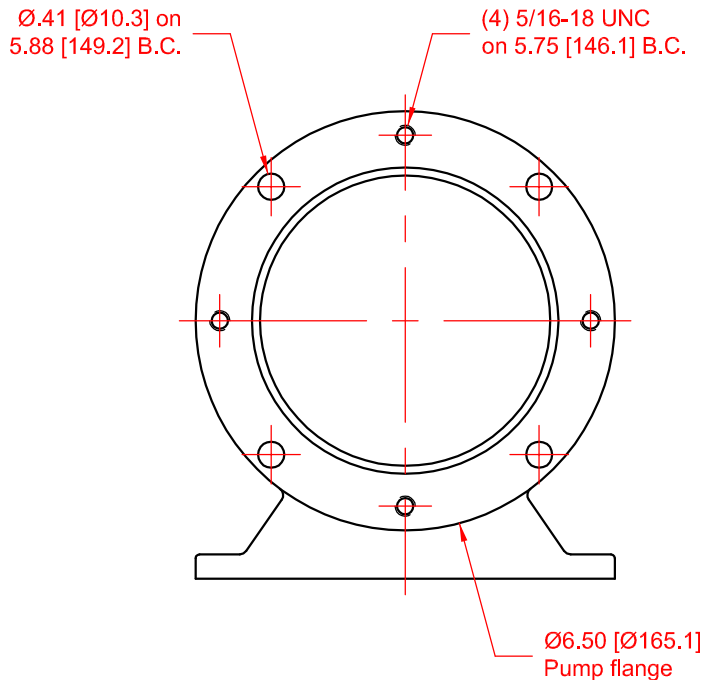
CONFIGURATION

Accessories

Pedestal

SP000, SP001, SP002, SP003, SP004, SP005, SP006, SP007, SP008, SP009, SP010, SP011

UNITS: inches [mm]

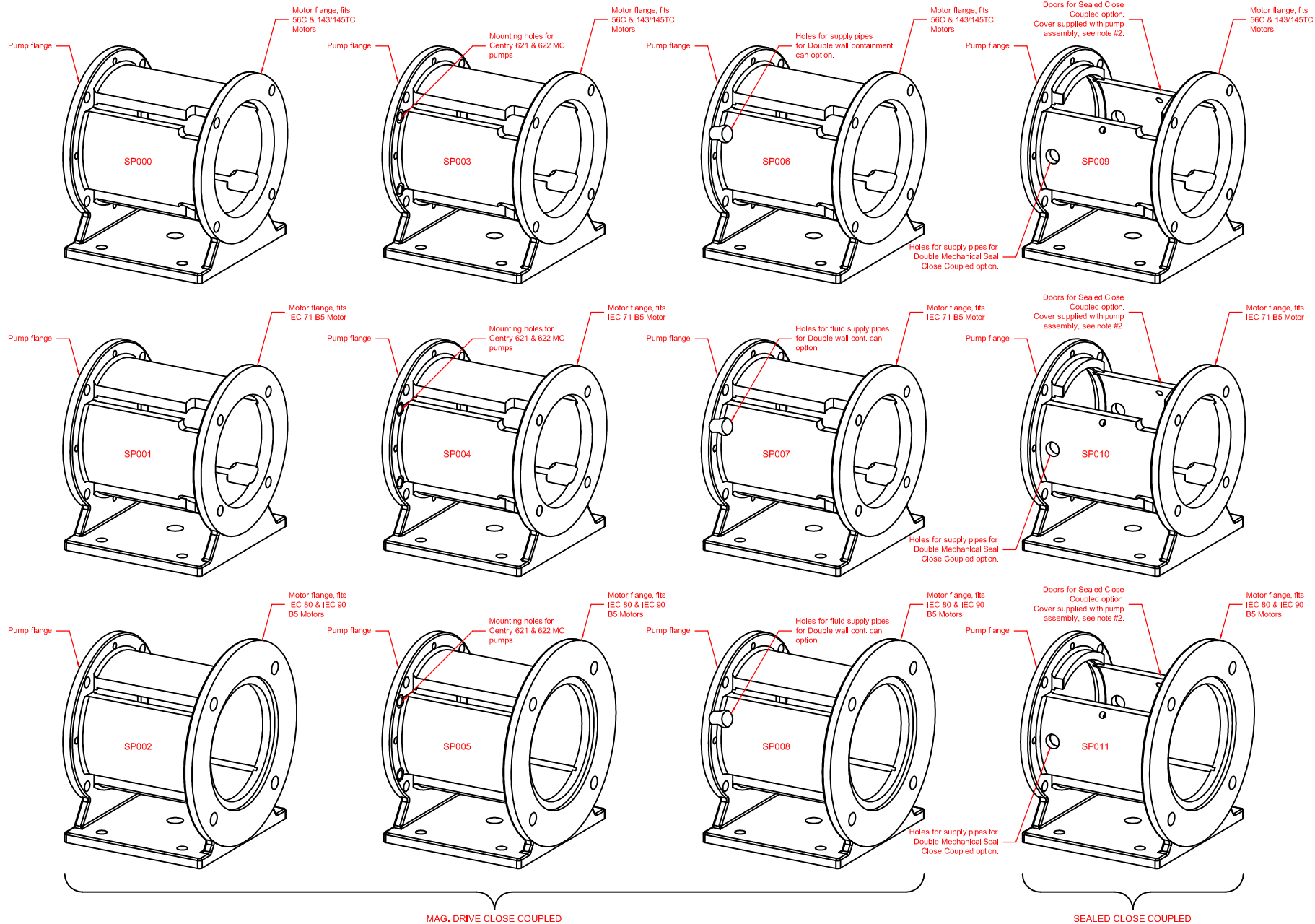


Pedestal	Motor flange	Holes ( Ø x B.C.)
SP000	6.50 [165.1]	.41 [10.3] x 5.875 [149.23]
SP003		
SP006		
SP009		
SP001	6.50 [165.1]	.41 [10.3] x 5.118 [130.00]
SP004		
SP007		
SP010		
SP002	7.88 [200.0]	.50 [12.7] x 6.496 [165.00]
SP005		
SP008		
SP011		

**NOTES:**

- 1) Material is Cast Iron, Epoxy painted.
- 2) A pedestal is supplied with the purchase of a close coupled pump.
- 3) SP000, SP003, SP006, SP009 fits 56C & 143/145TC motors  
SP001, SP004, SP007, SP010 fits IEC 71 B5 motors.  
SP002, SP005, SP008, SP011 fits IEC 80 B5 & IEC 90 B5 motors.
- 4) For Pedestal type explanation see drawing 20805.

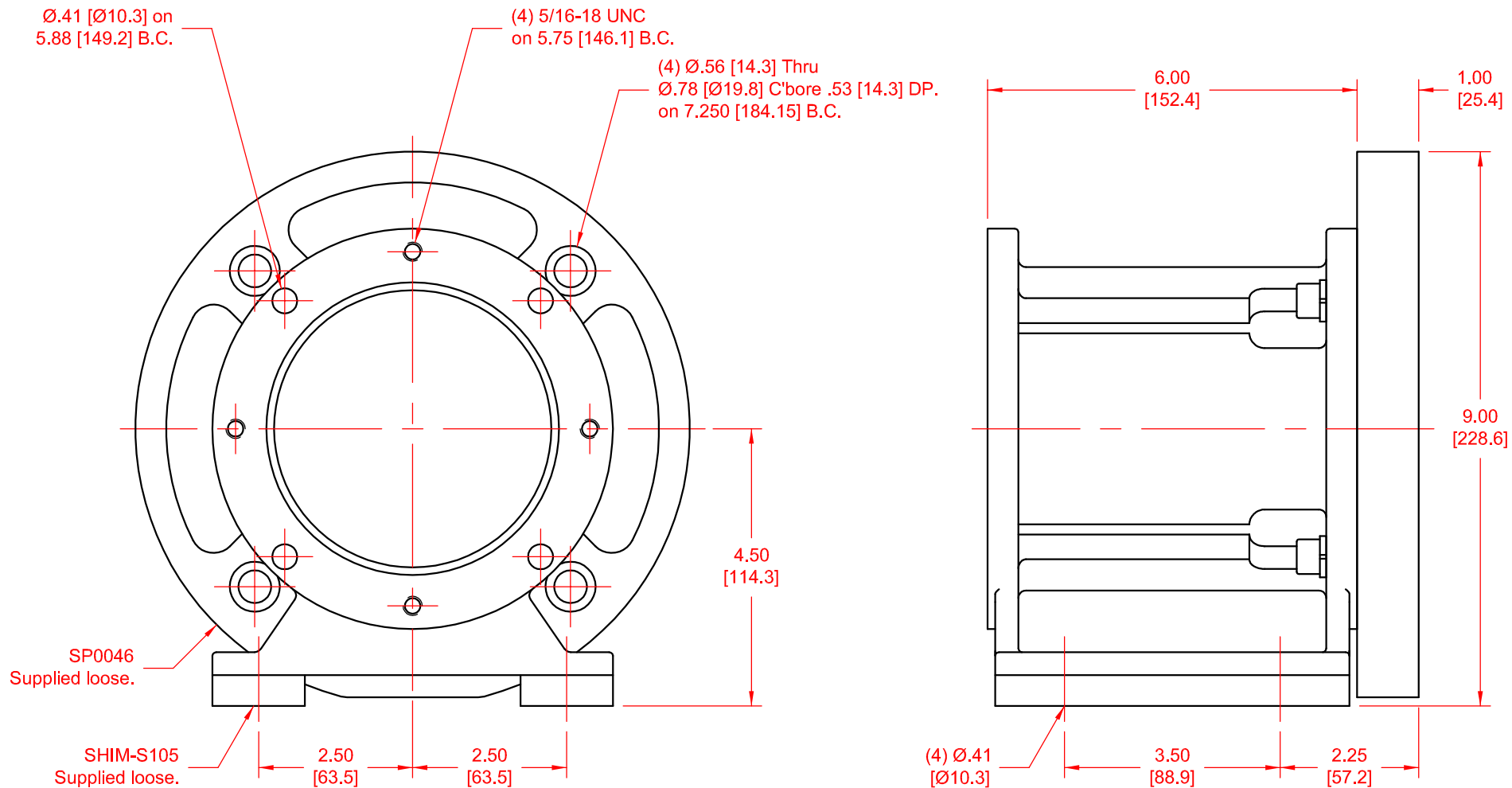
SERIES	MODEL	CONFIGURATION
Accessories	Pedestal	SP000, SP001, SP002, SP003, SP004, SP005, SP006, SP007, SP008, SP009, SP010, SP011.



**NOTES:**  
1) A pedestal is supplied with the purchase of a close coupled pump.  
2) Door cover is supplied with pump assembly, order door cover separately if purchasing pedestal as an individual part.

SERIES	MODEL	CONFIGURATION
Accessories	Pedestal	SP000, SP003, SP006, SP009 with SP0046 Adapter Plate (182/184TC Motors) & SHIM-S105.

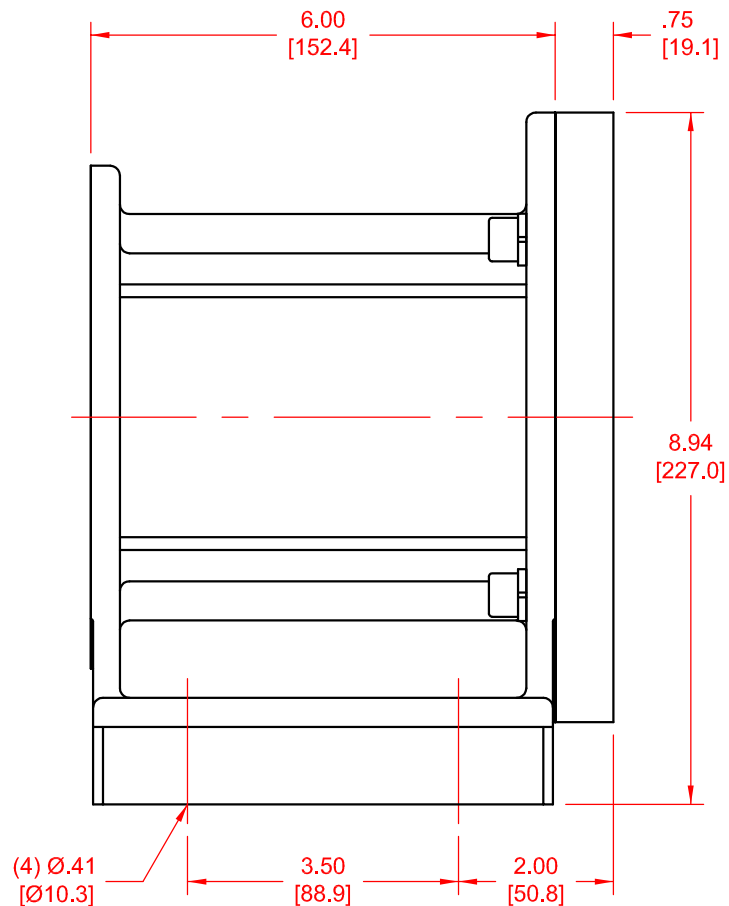
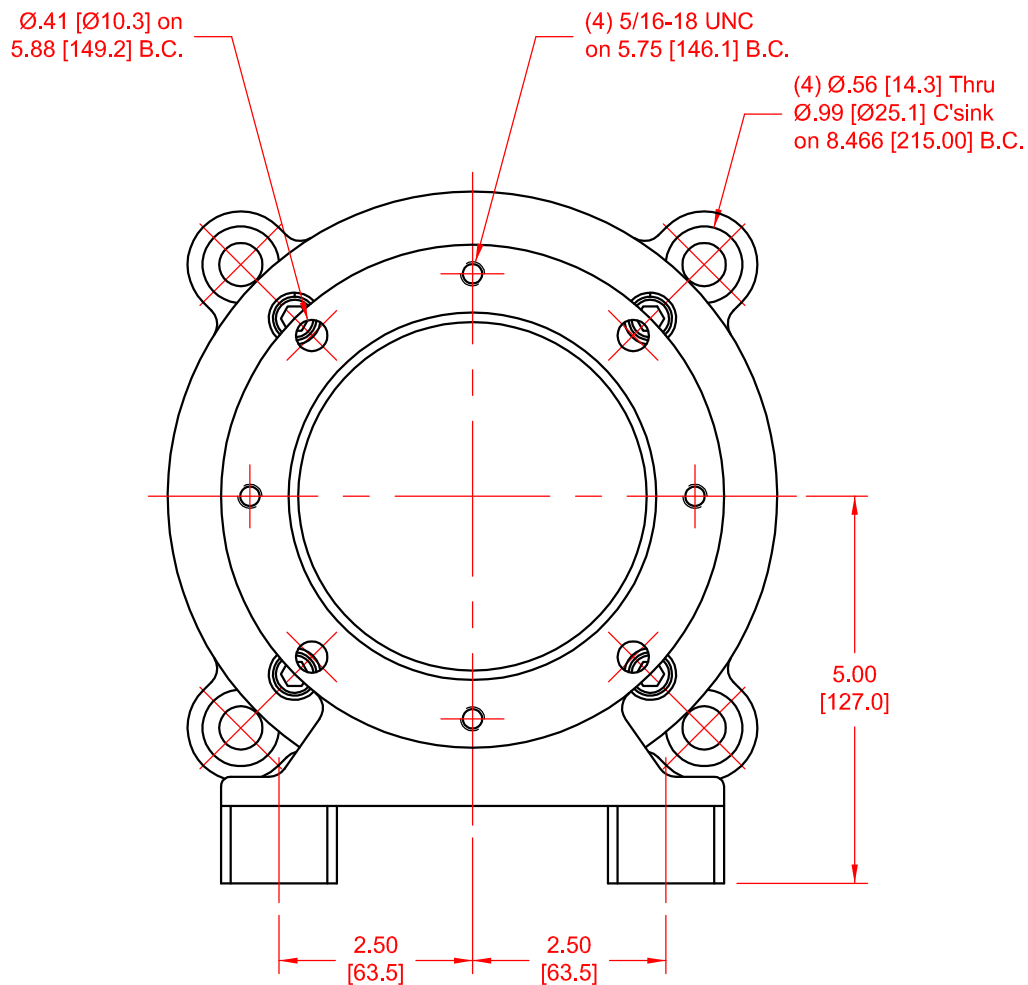
UNITS: inches [mm]



**NOTES:**  
1) Material is Cast Iron, Carbon Steel, Epoxy painted.

SERIES	MODEL	CONFIGURATION
Accessories	Pedestal	SP002-112, SP005-112, SP008-112, SP011-112 (IEC 100 B5 & IEC 112 B5 Motors)

UNITS: inches [mm]



**NOTES:**

- 1) Material is Cast Iron, Carbon Steel, Epoxy painted.
- 2) Pedestal, Adapter plate and Shims, supplied as one part.