



CONSOLIDATED BILL OF MATERIALS (BOM) FOR STANDARD H-SERIES GEAR PUMPS



**Models H5R & H5F
Sealed, Long-Coupled**



**Models H5R & H5F
Sealed & Mag-Drive,
Close-Coupled**

Table of Contents

Models H5R & H5F:	SEALED-LC:	316 SS Construction	2-3
		Alloy-C Construction	4-5
	SEALED-CC:	316 SS Construction	6-7
		Alloy-C Construction	8-9
	MAG-DRIVE:	316 SS Construction	10-11
		Alloy-C Construction	12-13
Appendix 1:	Exploded View Reference Drawings		14-16
Appendix 2:	Meaning of Abbreviated Terms		17
Appendix 3:	Additional Parts for SEALED-CC Configuration		18
Appendix 4:	Mag-Drive Motor-Mounting Hardware		19

Liquiflo Chemical Processing Pumps™	H-Series Gear Pumps BOM: SEALED, LC Models H5R & H5F
---	--

Part Description	Drwg. Item #	316 Stainless Steel Construction			
		Code	Material	H5R	H5F
Position 3 – Basic Material & Port Type (Center Housing, Alignment Pins & Hardware)					
Center Housing, NPT	21	S	316 SS	340001	340001
Center Housing, Flanged (ANSI 150# RF)	21	L	316 SS	340006	340006
Center Housing, BSPT	21	X	316 SS	340003	340003
Pin, Housing Alignment	12	S, L, X	316 SS	360801 (4)	360801 (4)
Bolt, Housing (#10-32 x 1.80 HHCS)	4	S, L, X	18-8 SS	342003 (4)	342003 (4)
Nut, Housing (#10-32)	10	S, L, X	18-8 SS	342101 (4)	342101 (4)
Lockwasher, Housing (#10)	15	S, L, X	18-8 SS	5018 (4)	5018 (4)
Position 4 – Drive Gear					
Gear	22	1	Alloy-C	950025	950020
Gear	22	3	Teflon	950018	950017
Gear	22	6	316 SS	950024	950019
Gear	22	K	Kynar	950089	950079
Gear	22	P	PEEK	950027	950022
Key, Gear	23A	1, 3, 6, K, P	316 SS	950029	950029
Position 5 – Idler Gear					
Gear	6	1	Alloy-C	950025	950020
Gear	6	2	Carbon	950028	950023
Gear	6	3	Teflon	950018	950017
Gear	6	6	316 SS	950024	950019
Gear	6	8	Ryton	950026	950021
Gear	6	K	Kynar	950089	950079
Gear	6	P	PEEK	950027	950022
Key, Gear	23B	1, 2, 3, 6, 8, K, P	316 SS	950029	950029
Position 6 – Wear Plates					
Wear Plate, Relieved	7	3	Teflon	310590 (4)	340521 (4)
Wear Plate, Relieved	7	4	SiC	310597 (4)	340582 (4)
Wear Plate, Relieved	7	E	Carbon 60	310596 (4)	340523 (4)
Wear Plate, Relieved	7	P	PEEK	310591 (4)	340524 (4)
Position 7 – Bearings					
Bearing, Short	3A	3	Teflon	950090 (3)	950090 (3)
Bearing, Long	3B	3	Teflon	950091 (1)	950091 (1)
Bearing, Short	3A	B	SiC	950014 (3)	950014 (3)
Bearing, Long	3B	B	SiC	950045 (1)	950045 (1)
Bearing, Short	3A	E	Carbon 60	950012 (3)	950012 (3)
Bearing, Long	3B	E	Carbon 60	950043 (1)	950043 (1)
Bearing, Short	3A	P	PEEK	950013 (3)	950013 (3)
Bearing, Long	3B	P	PEEK	950044 (1)	950044 (1)
Position 8 – Seal Type					
Mechanical Seal, Single Internal	11	U	316 SS/Carbon	A-867058	A-867058
Mechanical Seal, Single Internal	11	S	316 SS/Teflon	A-867059	A-867059
Mechanical Seal, Double	11	F	316 SS/Carbon	A-867031	A-867031
Mechanical Seal, Double	11	H	316 SS/Teflon	A-867032	A-867032
Seal Seat, Outer	24	U, S, F, H	SiC	371533	371533
Seal Seat, Inner	25	F, H	SiC	376103	376103
Gland Plate, SMS & DMS	17	U, S, F, H	316 SS	371724	371724
Screw, Gland (1/4-28 x 1 HHCS)	16	U, S, F, H	18-8 SS	362005 (2)	362005 (2)
Lockwasher, Gland (1/4)	19	U, S, F, H	18-8 SS	863701 (2)	863701 (2)
Plug, 1/8 NPT	9	U, S	316 SS	362304 (2)	362304 (2)
Packing Ring	18	L	Teflon	376501 (5)	376501 (5)
Packing Ring	18	R	Graphoil	376409 (5)	376409 (5)
Lantern Ring	11	L, R	316 SS	377110	377110
Gland Plate, PS	17	L, R	316 SS	371504	371504
Screw, Gland (1/4-28 x 1 HHCS)	16	L, R	18-8 SS	362005 (2)	362005 (2)
Grease Fitting, 1/8 NPT	24	L, R	303 SS	867201	867201
Plug, 1/8 NPT	9	L, R	316 SS	362304	362304

See page 14 for Reference Drawing.

Liquiflo Chemical Processing Pumps™	H-Series Gear Pumps BOM: SEALED, LC Models H5R & H5F
--	---

Part Description	Drwg. Item #	316 Stainless Steel Construction			
		Code	Material	H5R	H5F
Position 9 – Bearing Flush Option (Front & Rear Housings)					
Front Housing, Standard	8	0	316 SS	950081	950081
Front Housing, External Bearing Flush	8	1	316 SS	950083	950083
Front Housing, Internal Bearing Flush	8	2	316 SS	950085	950085
Rear Housing, Standard	2	0	316 SS	950006	950006
Rear Housing, External Bearing Flush	2	1	316 SS	950010	950010
Rear Housing, Internal Bearing Flush	2	2	316 SS	950008	950008
Plug, 1/8 NPT	9	1	316 SS	362304 (3)	362304 (3)
Position 10 – Shafts					
Drive Shaft, Uncoated	20	0	316 SS	950033	950033
Drive Shaft, CO-Coated	20	1	316 SS/CO	950033-CO	950033-CO
Drive Shaft, TC-Coated	20	2	316 SS/TC	950033-TC	950033-TC
Idler Shaft, Uncoated	1	0	316 SS	950031	950031
Idler Shaft, CO-Coated	1	1	316 SS/CO	950031-CO	950031-CO
Idler Shaft, TC-Coated	1	2	316 SS/TC	950031-TC	950031-TC
Position 11 – O-Rings/Gaskets					
O-ring, Housing (2-033)	5	0	Teflon	341102 (2)	341102 (2)
Gasket, Seal Seat, Outer (MS only)	18	0	Teflon	371106 (2)	371106 (2)
O-ring, Seal Seat, Inner (2-022; DMS only)	26	0	Viton	620613	620613
O-ring, Housing (2-033)	5	6	Silicone/FEP	341113 (2)	341113 (2)
Gasket, Seal Seat, Outer (MS only)	18	6	Teflon	371106 (2)	371106 (2)
O-ring, Seal Seat, Inner (2-022; DMS only)	26	6	Kalrez	620617	620617
O-ring, Housing (2-033)	5	B	Buna-N	341105 (2)	341105 (2)
Gasket, Seal Seat, Outer (MS only)	18	B	Buna-N	371109 (2)	371109 (2)
O-ring, Seal Seat, Inner (2-022; DMS only)	26	B	Buna-N	620616	620616
O-ring, Housing (2-033)	5	E	EPDM	341103 (2)	341103 (2)
Gasket, Seal Seat, Outer (MS only)	18	E	EPDM	371110 (2)	371110 (2)
O-ring, Seal Seat, Inner (2-022; DMS only)	26	E	EPDM	620615	620615
O-ring, Housing (2-033)	5	V	Viton	341108 (2)	341108 (2)
Gasket, Seal Seat, Outer (MS only)	18	V	Viton	371111 (2)	371111 (2)
O-ring, Seal Seat, Inner (2-022; DMS only)	26	V	Viton	620613	620613
O-ring, Housing (2-033)	5	K	Kalrez	341109 (2)	341109 (2)
Gasket, Seal Seat, Outer (MS only)	18	K	Kalrez	371112 (2)	371112 (2)
O-ring, Seal Seat, Inner (2-022; DMS only)	26	K	Kalrez	620617	620617
Position 12 – Retaining Rings					
Retaining Ring, Gear	14	0	316 SS	366702 (4)	366702 (4)
Position 13 – Bearing Pins					
Pin, Bearing Lock	13	0	Teflon	361801 (4)	361801 (4)
Pin, Bearing Lock (High Temperature)	13	6	316 SS	361807 (4)	361807 (4)
Position 14 – Coupling Method					
Long-Coupled	–	9	–	X	X
Suffix – Trim Options					
Temperature Trim (Gears & Bearings)	–	-8(T) ¹	–	Consult Factory	
Viscosity Trim (Gears)	–	-9D, -9T	–		

1 - T = Application Temperature in °F (e.g., -8(300) = Temperature Trim at 300°F).

Liquiflo Chemical Processing Pumps™	H-Series Gear Pumps BOM: SEALED, LC Models H5R & H5F
---	--

Part Description	Drwg. Item #	Alloy-C Construction			
		Code	Material	H5R	H5F
Position 3 – Basic Material & Port Type (Center Housing, Alignment Pins & Hardware)					
Center Housing, NPT	21	H	Alloy-C	340002	340002
Center Housing, Flanged (ANSI 150# RF)	21	C	Alloy-C	340007	340007
Center Housing, BSPT	21	Y	Alloy-C	340004	340004
Pin, Housing Alignment	12	H, C, Y	Alloy-C	360804 (4)	360804 (4)
Bolt, Housing (#10-32 x 1.80 HHCS)	4	H, C, Y	18-8 SS	342003 (4)	342003 (4)
Nut, Housing (#10-32)	10	H, C, Y	18-8 SS	342101 (4)	342101 (4)
Lockwasher, Housing (#10)	15	H, C, Y	18-8 SS	5018 (4)	5018 (4)
Position 4 – Drive Gear					
Gear	22	1	Alloy-C	950025	950020
Gear	22	3	Teflon	950018	950017
Gear	22	6	316 SS	X	X
Gear	22	K	Kynar	950089	950079
Gear	22	P	PEEK	950027	950022
Key, Gear	23A	1, 3, K, P	Alloy-C	950030	950030
Position 5 – Idler Gear					
Gear	6	1	Alloy-C	950025	950020
Gear	6	2	Carbon	950028	950023
Gear	6	3	Teflon	950018	950017
Gear	6	6	316 SS	X	X
Gear	6	8	Ryton	950026	950021
Gear	6	K	Kynar	950089	950079
Gear	6	P	PEEK	950027	950022
Key, Gear	23B	1, 2, 3, 8, K, P	Alloy-C	950030	950030
Position 6 – Wear Plates					
Wear Plate, Relieved	7	3	Teflon	310590 (4)	340521 (4)
Wear Plate, Relieved	7	4	SiC	310597 (4)	340582 (4)
Wear Plate, Relieved	7	E	Carbon 60	310596 (4)	340523 (4)
Wear Plate, Relieved	7	P	PEEK	310591 (4)	340524 (4)
Position 7 – Bearings					
Bearing, Short	3A	3	Teflon	950090 (3)	950090 (3)
Bearing, Long	3B	3	Teflon	950091 (1)	950091 (1)
Bearing, Short	3A	B	SiC	950014 (3)	950014 (3)
Bearing, Long	3B	B	SiC	950045 (1)	950045 (1)
Bearing, Short	3A	E	Carbon 60	950012 (3)	950012 (3)
Bearing, Long	3B	E	Carbon 60	950043 (1)	950043 (1)
Bearing, Short	3A	P	PEEK	950013 (3)	950013 (3)
Bearing, Long	3B	P	PEEK	950044 (1)	950044 (1)
Position 8 – Seal Type					
Mechanical Seal, Single Internal	11	U	Alloy-C/Carbon	A-867055	A-867055
Mechanical Seal, Single Internal	11	S	Alloy-C/Teflon	A-867060	A-867060
Mechanical Seal, Double	11	F	316 SS/Carbon	A-867031	A-867031
Mechanical Seal, Double	11	H	316 SS/Teflon	A-867032	A-867032
Seal Seat, Outer	24	U, S, F, H	SiC	371533	371533
Seal Seat, Inner	25	F, H	SiC	376103	376103
Gland Plate, SMS	17	U, S	Alloy-C	371726	371726
Gland Plate, DMS	17	F, H	316 SS	371724	371724
Screw, Gland (1/4-28 x 1 HHCS)	16	U, S, F, H	18-8 SS	362005 (2)	362005 (2)
Lockwasher, Gland (1/4)	19	U, S, F, H	18-8 SS	863701 (2)	863701 (2)
Plug, 1/8 NPT	9	U, S	Alloy-C	362301 (2)	362301 (2)
Packing Ring	18	L	Teflon	376501 (5)	376501 (5)
Packing Ring	18	R	Graphoil	376409 (5)	376409 (5)
Lantern Ring	11	L, R	Alloy-C	377111	377111
Gland Plate, PS	17	L, R	Alloy-C	371512	371512
Screw, Gland (1/4-28 x 1 HHCS)	16	L, R	18-8 SS	362005 (2)	362005 (2)
Grease Fitting, 1/8 NPT	24	L, R	303 SS	867201	867201
Plug, 1/8 NPT	9	L, R	Alloy-C	362301	362301

See page 14 for Reference Drawing.

Liquiflo Chemical Processing Pumps™	H-Series Gear Pumps BOM: SEALED, LC Models H5R & H5F
--	---

Part Description	Drwg. Item #	Alloy-C Construction			
		Code	Material	H5R	H5F
Position 9 – Bearing Flush Option (Front & Rear Housings)					
Front Housing, Standard	8	0	Alloy-C	950082	950082
Front Housing, External Bearing Flush	8	1	Alloy-C	950084	950084
Front Housing, Internal Bearing Flush	8	2	Alloy-C	950086	950086
Rear Housing, Standard	2	0	Alloy-C	950007	950007
Rear Housing, External Bearing Flush	2	1	Alloy-C	950011	950011
Rear Housing, Internal Bearing Flush	2	2	Alloy-C	950009	950009
Plug, 1/8 NPT	9	1	Alloy-C	362301 (3)	362301 (3)
Position 10 – Shafts					
Drive Shaft, Uncoated	20	0	Alloy-C	950034	950034
Drive Shaft, CO-Coated	20	1	Alloy-C/CO	950034-CO	950034-CO
Drive Shaft, TC-Coated	20	2	Alloy-C/TC	950034-TC	950034-TC
Idler Shaft, Uncoated	1	0	Alloy-C	950032	950032
Idler Shaft, CO-Coated	1	1	Alloy-C/CO	950032-CO	950032-CO
Idler Shaft, TC-Coated	1	2	Alloy-C/TC	950032-TC	950032-TC
Position 11 – O-Rings/Gaskets					
O-ring, Housing (2-033)	5	0	Teflon	341102 (2)	341102 (2)
Gasket, Seal Seat, Outer (MS only)	18	0	Teflon	371106 (2)	371106 (2)
O-ring, Seal Seat, Inner (2-022; DMS only)	26	0	Viton	620613	620613
O-ring, Housing (2-033)	5	6	Silicone/FEP	341113 (2)	341113 (2)
Gasket, Seal Seat, Outer (MS only)	18	6	Teflon	371106 (2)	371106 (2)
O-ring, Seal Seat, Inner (2-022; DMS only)	26	6	Kalrez	620617	620617
O-ring, Housing (2-033)	5	B	Buna-N	341105 (2)	341105 (2)
Gasket, Seal Seat, Outer (MS only)	18	B	Buna-N	371109 (2)	371109 (2)
O-ring, Seal Seat, Inner (2-022; DMS only)	26	B	Buna-N	620616	620616
O-ring, Housing (2-033)	5	E	EPDM	341103 (2)	341103 (2)
Gasket, Seal Seat, Outer (MS only)	18	E	EPDM	371110 (2)	371110 (2)
O-ring, Seal Seat, Inner (2-022; DMS only)	26	E	EPDM	620615	620615
O-ring, Housing (2-033)	5	V	Viton	341108 (2)	341108 (2)
Gasket, Seal Seat, Outer (MS only)	18	V	Viton	371111 (2)	371111 (2)
O-ring, Seal Seat, Inner (2-022; DMS only)	26	V	Viton	620613	620613
O-ring, Housing (2-033)	5	K	Kalrez	341109 (2)	341109 (2)
Gasket, Seal Seat, Outer (MS only)	18	K	Kalrez	371112 (2)	371112 (2)
O-ring, Seal Seat, Inner (2-022; DMS only)	26	K	Kalrez	620617	620617
Position 12 – Retaining Rings					
Retaining Ring, Gear	14	0	Alloy-C	366701 (4)	366701 (4)
Position 13 – Bearing Pins					
Pin, Bearing Lock	13	0	Teflon	361801 (4)	361801 (4)
Pin, Bearing Lock (High Temperature)	13	1	Alloy-C	361806 (4)	361806 (4)
Position 14 – Coupling Method					
Long-Coupled	–	9	–	X	X
Suffix – Trim Options					
Temperature Trim (Gears & Bearings)	–	-8(T) ¹	–	Consult Factory	
Viscosity Trim (Gears)	–	-9D, -9T	–		

1 - T = Application Temperature in °F (e.g., -8(300) = Temperature Trim at 300°F).

Liquiflo Chemical Processing Pumps™	H-Series Gear Pumps BOM: SEALED, CC Models H5R & H5F
--	---

Part Description	Drwg. Item #	316 Stainless Steel Construction			
		Code	Material	H5R	H5F
Position 3 – Basic Material & Port Type (Center Housing, Alignment Pins & Hardware)					
Center Housing, NPT	21	S	316 SS	340001	340001
Center Housing, Flanged (ANSI 150# RF)	21	L	316 SS	340006	340006
Center Housing, BSPT	21	X	316 SS	340003	340003
Pin, Housing Alignment	12	S, L, X	316 SS	360801 (4)	360801 (4)
Bolt, Housing (#10-32 x 1.80 HHCS)	4	S, L, X	18-8 SS	342003 (4)	342003 (4)
Nut, Housing (#10-32)	10	S, L, X	18-8 SS	342101 (4)	342101 (4)
Lockwasher, Housing (#10)	15	S, L, X	18-8 SS	5018 (4)	5018 (4)
Position 4 – Drive Gear					
Gear	22	1	Alloy-C	950025	950020
Gear	22	3	Teflon	950018	950017
Gear	22	6	316 SS	950024	950019
Gear	22	K	Kynar	950089	950079
Gear	22	P	PEEK	950027	950022
Key, Gear	23A	1, 3, 6, K, P	316 SS	950029	950029
Position 5 – Idler Gear					
Gear	6	1	Alloy-C	950025	950020
Gear	6	2	Carbon	950028	950023
Gear	6	3	Teflon	950018	950017
Gear	6	6	316 SS	950024	950019
Gear	6	8	Ryton	950026	950021
Gear	6	K	Kynar	950089	950079
Gear	6	P	PEEK	950027	950022
Key, Gear	23B	1, 2, 3, 6, 8, K, P	316 SS	950029	950029
Position 6 – Wear Plates					
Wear Plate, Relieved	7	3	Teflon	310590 (4)	340521 (4)
Wear Plate, Relieved	7	4	SiC	310597 (4)	340582 (4)
Wear Plate, Relieved	7	E	Carbon 60	310596 (4)	340523 (4)
Wear Plate, Relieved	7	P	PEEK	310591 (4)	340524 (4)
Position 7 – Bearings					
Bearing, Short	3A	3	Teflon	950090 (3)	950090 (3)
Bearing, Long	3B	3	Teflon	950091 (1)	950091 (1)
Bearing, Short	3A	B	SiC	950014 (3)	950014 (3)
Bearing, Long	3B	B	SiC	950045 (1)	950045 (1)
Bearing, Short	3A	E	Carbon 60	950012 (3)	950012 (3)
Bearing, Long	3B	E	Carbon 60	950043 (1)	950043 (1)
Bearing, Short	3A	P	PEEK	950013 (3)	950013 (3)
Bearing, Long	3B	P	PEEK	950044 (1)	950044 (1)
Position 8 – Seal Type					
Mechanical Seal, Single Internal & External	11	U, W	316 SS/Carbon	A-867058	A-867058
Mechanical Seal, Single Internal & External	11	S, X	316 SS/Teflon	A-867059	A-867059
Mechanical Seal, Double	11	F	316 SS/Carbon	A-867031	A-867031
Mechanical Seal, Double	11	H	316 SS/Teflon	A-867032	A-867032
Seal Housing, SMS/DMS/PS	28	U, S, F, H	316 SS	370270	370270
Seal Housing, EMS	28	W, X	316 SS	370273	370273
Seal Seat, Outer	24	U, S, W, X, F, H	SiC	371533	371533
Seal Seat, Inner	25	F, H	SiC	376103	376103
Gland Plate, SMS/EMS/DMS	17	U, S, W, X, F, H	316 SS	371724	371724
Screw, Gland (1/4-28 x 1 HHCS)	16	U, S, W, X, F, H	18-8 SS	362005 (2)	362005 (2)
Lockwasher, Gland (1/4)	19	U, S, W, X, F, H	18-8 SS	863701 (2)	863701 (2)
Plug, 1/8 NPT	9	U, S, W, X	316 SS	362304 (2)	362304 (2)
Packing Ring	43	L	Teflon	376501 (5)	376501 (5)
Packing Ring	43	R	Graphoil	376409 (5)	376409 (5)
Seal Housing, SMS/DMS/PS	28	L, R	316 SS	370270	370270
Lantern Ring	44	L, R	316 SS	377110	377110
Gland Plate, PS	17	L, R	316 SS	371504	371504
Screw, Gland (1/4-28 x 1 HHCS)	16	L, R	18-8 SS	362005 (2)	362005 (2)
Grease Fitting, 1/8 NPT	45	L, R	303 SS	867201	867201
Plug, 1/8 NPT	9	L, R	316 SS	362304	362304

See page 15 for Reference Drawing.

Liquiflo Chemical Processing Pumps™	H-Series Gear Pumps BOM: SEALED, CC Models H5R & H5F
--	---

Part Description	Drwg. Item #	316 Stainless Steel Construction			
		Code	Material	H5R	H5F
Position 9 – Bearing Flush Option (Front & Rear Housings)					
Front Housing, CC, Standard & EBF	8	0, 1	316 SS	950039	950039
Front Housing, CC, IBF	8	2	316 SS	950041	950041
Rear Housing, Standard	2	0	316 SS	950006	950006
Rear Housing, EBF	2	1	316 SS	950010	950010
Rear Housing, IBF	2	2	316 SS	950008	950008
Plug, 1/8 NPT	9	0, 2	316 SS	362304 (1)	362304 (1)
Plug, 1/8 NPT	9	1	316 SS	362304 (3)	362304 (3)
Position 10 – Shafts					
Drive Shaft, Uncoated	20	0	316 SS	950033	950033
Drive Shaft, CO-Coated	20	1	316 SS/CO	950033-CO	950033-CO
Drive Shaft, TC-Coated	20	2	316 SS/TC	950033-TC	950033-TC
Idler Shaft, Uncoated	1	0	316 SS	950031	950031
Idler Shaft, CO-Coated	1	1	316 SS/CO	950031-CO	950031-CO
Idler Shaft, TC-Coated	1	2	316 SS/TC	950031-TC	950031-TC
Position 11 – O-Rings/Gaskets					
O-ring, Housing (2-033)	5	0	Teflon	341102 (2)	341102 (2)
O-ring, Seal Housing (2-042)	27	0	Teflon	S4000	S4000
Gasket, Seal Seat, Outer (MS only)	18	0	Teflon	371106 (2)	371106 (2)
O-ring, Seal Seat, Inner (2-022; DMS only)	26	0	Viton	620613	620613
O-ring, Housing (2-033)	5	6	Silicone/FEP	341113 (2)	341113 (2)
O-ring, Seal Housing (2-042)	27	6	Silicone/FEP	371118	371118
Gasket, Seal Seat, Outer (MS only)	18	6	Teflon	371106 (2)	371106 (2)
O-ring, Seal Seat, Inner (2-022; DMS only)	26	6	Kalrez	620617	620617
O-ring, Housing (2-033)	5	B	Buna-N	341105 (2)	341105 (2)
O-ring, Seal Housing (2-042)	27	B	Buna-N	S4003	S4003
Gasket, Seal Seat, Outer (MS only)	18	B	Buna-N	371109 (2)	371109 (2)
O-ring, Seal Seat, Inner (2-022; DMS only)	26	B	Buna-N	620616	620616
O-ring, Housing (2-033)	5	E	EPDM	341103 (2)	341103 (2)
O-ring, Seal Housing (2-042)	27	E	EPDM	S4001	S4001
Gasket, Seal Seat, Outer (MS only)	18	E	EPDM	371110 (2)	371110 (2)
O-ring, Seal Seat, Inner (2-022; DMS only)	26	E	EPDM	620615	620615
O-ring, Housing (2-033)	5	V	Viton	341108 (2)	341108 (2)
O-ring, Seal Housing (2-042)	27	V	Viton	S4002	S4002
Gasket, Seal Seat, Outer (MS only)	18	V	Viton	371111 (2)	371111 (2)
O-ring, Seal Seat, Inner (2-022; DMS only)	26	V	Viton	620613	620613
O-ring, Housing (2-033)	5	K	Kalrez	341109 (2)	341109 (2)
O-ring, Seal Housing (2-042)	27	K	Kalrez	S4004	S4004
Gasket, Seal Seat, Outer (MS only)	18	K	Kalrez	371112 (2)	371112 (2)
O-ring, Seal Seat, Inner (2-022; DMS only)	26	K	Kalrez	620617	620617
Position 12 – Retaining Rings					
Retaining Ring, Gear	14	0	316 SS	366702 (4)	366702 (4)
Position 13 – Bearing Pins					
Pin, Bearing Lock	13	0	Teflon	361801 (4)	361801 (4)
Pin, Bearing Lock (High Temperature)	13	6	316 SS	361807 (4)	361807 (4)
Position 14 – Coupling Method					
Close-Coupled (Additional Parts)	–	0-5, 8	–	See Appendix 3	
Suffix – Trim Options					
Temperature Trim (Gears & Bearings)	–	-8(T) ¹	–	Consult Factory	
Viscosity Trim (Gears)	–	-9D, -9T	–		

1 - T = Application Temperature in °F (e.g., -8(300) = Temperature Trim at 300°F).

Liquiflo Chemical Processing Pumps™	H-Series Gear Pumps BOM: SEALED, CC Models H5R & H5F
---	---

Part Description	Drwg. Item #	Alloy-C Construction			
		Code	Material	H5R	H5F
Position 3 – Basic Material & Port Type (Center Housing, Alignment Pins & Hardware)					
Center Housing, NPT	21	H	Alloy-C	340002	340002
Center Housing, Flanged (ANSI 150# RF)	21	C	Alloy-C	340007	340007
Center Housing, BSPT	21	Y	Alloy-C	340004	340004
Pin, Housing Alignment	12	H, C, Y	Alloy-C	360804 (4)	360804 (4)
Bolt, Housing (#10-32 x 1.80 HHCS)	4	H, C, Y	18-8 SS	342003 (4)	342003 (4)
Nut, Housing (#10-32)	10	H, C, Y	18-8 SS	342101 (4)	342101 (4)
Lockwasher, Housing (#10)	15	H, C, Y	18-8 SS	5018 (4)	5018 (4)
Position 4 – Drive Gear					
Gear	22	1	Alloy-C	950025	950020
Gear	22	3	Teflon	950018	950017
Gear	22	6	316 SS	X	X
Gear	22	K	Kynar	950089	950079
Gear	22	P	PEEK	950027	950022
Key, Gear	23A	1, 3, K, P	Alloy-C	950030	950030
Position 5 – Idler Gear					
Gear	6	1	Alloy-C	950025	950020
Gear	6	2	Carbon	950028	950023
Gear	6	3	Teflon	950018	950017
Gear	6	6	316 SS	X	X
Gear	6	8	Ryton	950026	950021
Gear	6	K	Kynar	950089	950079
Gear	6	P	PEEK	950027	950022
Key, Gear	23B	1, 2, 3, 8, K, P	Alloy-C	950030	950030
Position 6 – Wear Plates					
Wear Plate, Relieved	7	3	Teflon	310590 (4)	340521 (4)
Wear Plate, Relieved	7	4	SiC	310597 (4)	340582 (4)
Wear Plate, Relieved	7	E	Carbon 60	310596 (4)	340523 (4)
Wear Plate, Relieved	7	P	PEEK	310591 (4)	340524 (4)
Position 7 – Bearings					
Bearing, Short	3A	3	Teflon	950090 (3)	950090 (3)
Bearing, Long	3B	3	Teflon	950091 (1)	950091 (1)
Bearing, Short	3A	B	SiC	950014 (3)	950014 (3)
Bearing, Long	3B	B	SiC	950045 (1)	950045 (1)
Bearing, Short	3A	E	Carbon 60	950012 (3)	950012 (3)
Bearing, Long	3B	E	Carbon 60	950043 (1)	950043 (1)
Bearing, Short	3A	P	PEEK	950013 (3)	950013 (3)
Bearing, Long	3B	P	PEEK	950044 (1)	950044 (1)
Position 8 – Seal Type					
Mechanical Seal, Single Internal & External	11	U, W	Alloy-C/Carbon	A-867055	A-867055
Mechanical Seal, Single Internal & External	11	S, X	Alloy-C/Teflon	A-867060	A-867060
Mechanical Seal, Double	11	F	316 SS/Carbon	A-867031	A-867031
Mechanical Seal, Double	11	H	316 SS/Teflon	A-867032	A-867032
Seal Housing, SMS/DMS/PS	28	U, S, F, H	Alloy-C	370271	370271
Seal Housing, EMS	28	W, X	Alloy-C	370272	370272
Seal Seat, Outer	24	U, S, W, X, F, H	SiC	371533	371533
Seal Seat, Inner	25	F, H	SiC	376103	376103
Gland Plate, SMS & EMS	17	U, S, W, X	Alloy-C	371726	371726
Gland Plate, DMS	17	F, H	316 SS	371724	371724
Screw, Gland (1/4-28 x 1 HHCS)	16	U, S, W, X, F, H	18-8 SS	362005 (2)	362005 (2)
Lockwasher, Gland (1/4)	19	U, S, W, X, F, H	18-8 SS	863701 (2)	863701 (2)
Plug, 1/8 NPT	9	U, S, W, X	Alloy-C	362301 (2)	362301 (2)
Packing Ring	43	L	Teflon	376501 (5)	376501 (5)
Packing Ring	43	R	Graphoil	376409 (5)	376409 (5)
Seal Housing, SMS/DMS/PS	28	L, R	Alloy-C	370271	370271
Lantern Ring	44	L, R	Alloy-C	377111	377111
Gland Plate, PS	17	L, R	Alloy-C	371512	371512
Screw, Gland (1/4-28 x 1 HHCS)	16	L, R	18-8 SS	362005 (2)	362005 (2)
Grease Fitting, 1/8 NPT	45	L, R	303 SS	867201	867201
Plug, 1/8 NPT	9	L, R	Alloy-C	362301	362301

See page 15 for Reference Drawing.

Liquiflo
Chemical Processing Pumps™

H-Series Gear Pumps
BOM: SEALED, CC Models H5R & H5F

Part Description	Drwg. Item #	Alloy-C Construction			
		Code	Material	H5R	H5F
Position 9 – Bearing Flush Option (Front & Rear Housings)					
Front Housing, CC, Standard & EBF	8	0, 1	Alloy-C	950040	950040
Front Housing, CC, IBF	8	2	Alloy-C	950042	950042
Rear Housing, Standard	2	0	Alloy-C	950007	950007
Rear Housing, EBF	2	1	Alloy-C	950011	950011
Rear Housing, IBF	2	2	Alloy-C	950009	950009
Plug, 1/8 NPT	9	0, 2	Alloy-C	362301 (1)	362301 (1)
Plug, 1/8 NPT	9	1	Alloy-C	362301 (3)	362301 (3)
Position 10 – Shafts					
Drive Shaft, Uncoated	20	0	Alloy-C	950034	950034
Drive Shaft, CO-Coated	20	1	Alloy-C/CO	950034-CO	950034-CO
Drive Shaft, TC-Coated	20	2	Alloy-C/TC	950034-TC	950034-TC
Idler Shaft, Uncoated	1	0	Alloy-C	950032	950032
Idler Shaft, CO-Coated	1	1	Alloy-C/CO	950032-CO	950032-CO
Idler Shaft, TC-Coated	1	2	Alloy-C/TC	950032-TC	950032-TC
Position 11 – O-Rings/Gaskets					
O-ring, Housing (2-033)	5	0	Teflon	341102 (2)	341102 (2)
O-ring, Seal Housing (2-042)	27	0	Teflon	S4000	S4000
Gasket, Seal Seat, Outer (MS only)	18	0	Teflon	371106 (2)	371106 (2)
O-ring, Seal Seat, Inner (2-022; DMS only)	26	0	Viton	620613	620613
O-ring, Housing (2-033)	5	6	Silicone/FEP	341113 (2)	341113 (2)
O-ring, Seal Housing (2-042)	27	6	Silicone/FEP	371118	371118
Gasket, Seal Seat, Outer (MS only)	18	6	Teflon	371106 (2)	371106 (2)
O-ring, Seal Seat, Inner (2-022; DMS only)	26	6	Kalrez	620617	620617
O-ring, Housing (2-033)	5	B	Buna-N	341105 (2)	341105 (2)
O-ring, Seal Housing (2-042)	27	B	Buna-N	S4003	S4003
Gasket, Seal Seat, Outer (MS only)	18	B	Buna-N	371109 (2)	371109 (2)
O-ring, Seal Seat, Inner (2-022; DMS only)	26	B	Buna-N	620616	620616
O-ring, Housing (2-033)	5	E	EPDM	341103 (2)	341103 (2)
O-ring, Seal Housing (2-042)	27	E	EPDM	S4001	S4001
Gasket, Seal Seat, Outer (MS only)	18	E	EPDM	371110 (2)	371110 (2)
O-ring, Seal Seat, Inner (2-022; DMS only)	26	E	EPDM	620615	620615
O-ring, Housing (2-033)	5	V	Viton	341108 (2)	341108 (2)
O-ring, Seal Housing (2-042)	27	V	Viton	S4002	S4002
Gasket, Seal Seat, Outer (MS only)	18	V	Viton	371111 (2)	371111 (2)
O-ring, Seal Seat, Inner (2-022; DMS only)	26	V	Viton	620613	620613
O-ring, Housing (2-033)	5	K	Kalrez	341109 (2)	341109 (2)
O-ring, Seal Housing (2-042)	27	K	Kalrez	S4004	S4004
Gasket, Seal Seat, Outer (MS only)	18	K	Kalrez	371112 (2)	371112 (2)
O-ring, Seal Seat, Inner (2-022; DMS only)	26	K	Kalrez	620617	620617
Position 12 – Retaining Rings					
Retaining Ring, Gear	14	0	Alloy-C	366701 (4)	366701 (4)
Position 13 – Bearing Pins					
Pin, Bearing Lock	13	0	Teflon	361801 (4)	361801 (4)
Pin, Bearing Lock (High Temperature)	13	1	Alloy-C	361806 (4)	361806 (4)
Position 14 – Coupling Method					
Close-Coupled (Additional Parts)	–	0-5, 8	–	See Appendix 3	
Suffix – Trim Options					
Temperature Trim (Gears & Bearings)	–	-8(T) ¹	–	Consult Factory	
Viscosity Trim (Gears)	–	-9D, -9T	–		

1 - T = Application Temperature in °F (e.g., -8(300) = Temperature Trim at 300°F).

Liquiflo Chemical Processing Pumps™	H-Series Gear Pumps BOM: MAG-DRIVE, CC Models H5R & H5F
---	--

Part Description	Drwg. Item #	316 Stainless Steel Construction			
		Code	Material	H5R	H5F
Position 3 – Basic Material & Port Type (Center Housing, Alignment Pins & Hardware)					
Center Housing, NPT	21	S	316 SS	340001	340001
Center Housing, Flanged (ANSI 150# RF)	21	L	316 SS	340006	340006
Center Housing, BSPT	21	X	316 SS	340003	340003
Pin, Housing Alignment	24	S, L, X	316 SS	360801 (4)	360801 (4)
Bolt, Housing (#10-32 x 1.80 HHCS)	4	S, L, X	18-8 SS	342003 (4)	342003 (4)
Nut, Housing (#10-32)	29	S, L, X	18-8 SS	342101 (4)	342101 (4)
Lockwasher, Housing (#10)	30	S, L, X	18-8 SS	5018 (4)	5018 (4)
Bolt, Front Housing (3/8-16 x 1.50 HHCS)	27	S, L, X	18-8 SS	620833 (4)	620833 (4)
Nut, Front Housing (3/8-16)	26	S, L, X	18-8 SS	S1003 (4)	S1003 (4)
Lockwasher, Front Housing (3/8)	31	S, L, X	18-8 SS	S1004 (4)	S1004 (4)
Bolt, Cont. Can (1/4-28 x 5/8 HHCS)	18	S, L, X	18-8 SS	S620013 (6)	S620013 (6)
Lockwasher, Cont. Can (1/4)	32	S, L, X	18-8 SS	863701 (6)	863701 (6)
Position 4 – Drive Gear					
Gear	22	1	Alloy-C	950025	950020
Gear	22	3	Teflon	950018	950017
Gear	22	6	316 SS	950024	950019
Gear	22	K	Kynar	950089	950079
Gear	22	P	PEEK	950027	950022
Key, Gear	23A	1, 3, 6, K, P	316 SS	950029	950029
Position 5 – Idler Gear					
Gear	6	1	Alloy-C	950025	950020
Gear	6	2	Carbon	950028	950023
Gear	6	3	Teflon	950018	950017
Gear	6	6	316 SS	950024	950019
Gear	6	8	Ryton	950026	950021
Gear	6	K	Kynar	950089	950079
Gear	6	P	PEEK	950027	950022
Key, Gear	23B	1, 2, 3, 6, 8, K, P	316 SS	950029	950029
Position 6 – Wear Plates					
Wear Plate, Relieved	7	3	Teflon	310590 (4)	340521 (4)
Wear Plate, Relieved	7	4	SiC	310597 (4)	340582 (4)
Wear Plate, Relieved	7	E	Carbon 60	310596 (4)	340523 (4)
Wear Plate, Relieved	7	P	PEEK	310591 (4)	340524 (4)
Position 7 – Bearings					
Bearing, Short	3A	3	Teflon	950090 (3)	950090 (3)
Bearing, Long	3B	3	Teflon	950091 (1)	950091 (1)
Bearing, Short	3A	B	SiC	950014 (3)	950014 (3)
Bearing, Long	3B	B	SiC	950045 (1)	950045 (1)
Bearing, Short	3A	E	Carbon 60	950012 (3)	950012 (3)
Bearing, Long	3B	E	Carbon 60	950043 (1)	950043 (1)
Bearing, Short	3A	P	PEEK	950013 (3)	950013 (3)
Bearing, Long	3B	P	PEEK	950044 (1)	950044 (1)
Position 8 – Outer Magnet Bore (Pedestal, Shims, Adapter & Motor-Mounting Hardware)					
Pedestal – 5/8" (NEMA 56C)	16	0	CI/Epoxy	SP000	SP000
Pedestal – 7/8" (NEMA 143/145TC)	16	1	CI/Epoxy	SP000	SP000
Pedestal – 14 mm (IEC 71 - B5)	16	2	CI/Epoxy	SP001	SP001
Pedestal – 19 mm (IEC 80 - B5)	16	3	CI/Epoxy	SP002	SP002
Pedestal – 24 mm (IEC 90 - B5)	16	4	CI/Epoxy	SP002	SP002
Pedestal – 1-1/8" (NEMA 182/184TC)	16	5	CI/Epoxy	SP000	SP000
Shim, Pedestal (NEMA 182/184TC)	-	5	303 SS	SHIM-S105 (4)	SHIM-S105 (4)
Adapter Plate (NEMA 182/184TC)	-	5	CS/Epoxy	SP0046	SP0046
Pedestal – 28 mm (IEC 100/112 - B5)	16	8	CI/Epoxy	SP002	SP002
Shim, Pedestal (IEC 100/112 - B5)	-	8	CS/Epoxy	SHIM-112 (2)	SHIM-112 (2)
Adapter Plate (IEC 100/112 - B5)	-	8	CS/Epoxy	SP0048	SP0048
Motor-Mounting Hardware	15/34	0-5, 8	18-8 SS	See Appendix 4	
Position 9 – Bearing Flush Option (Front & Rear Housings)					
Front Housing, MC, Standard & EBF	8	0, 1	316 SS	950039	950039
Front Housing, MC, IBF	8	2	316 SS	950041	950041
Rear Housing, Standard	2	0	316 SS	950006	950006
Rear Housing, EBF	2	1	316 SS	950010	950010
Rear Housing, IBF	2	2	316 SS	950008	950008

Liquiflo Chemical Processing Pumps™	H-Series Gear Pumps BOM: MAG-DRIVE, CC Models H5R & H5F
---	--

Part Description	Drwg. Item #	316 Stainless Steel Construction			
		Code	Material	H5R	H5F
Position 9 – Bearing Flush Option [Continued]					
Plug, 1/8 NPT	9	0, 2	316 SS	362304 (1)	362304 (1)
Plug, 1/8 NPT	9	1	316 SS	362304 (3)	362304 (3)
Position 10 – Shafts					
Drive Shaft, MC, Uncoated	20	0	316 SS	950035	950035
Drive Shaft, MC, CO-Coated	20	1	316 SS/CO	950035-CO	950035-CO
Drive Shaft, MC, TC-Coated	20	2	316 SS/TC	950035-TC	950035-TC
Idler Shaft, Uncoated	1	0	316 SS	950031	950031
Idler Shaft, CO-Coated	1	1	316 SS/CO	950031-CO	950031-CO
Idler Shaft, TC-Coated	1	2	316 SS/TC	950031-TC	950031-TC
Position 11 – O-Rings					
O-ring, Housing (2-033)	5	0	Teflon	341102 (2)	341102 (2)
O-ring, Containment Can (2-042)	19	0	Teflon	S4000	S4000
O-ring, Housing (2-033)	5	6	Silicone/FEP	341113 (2)	341113 (2)
O-ring, Containment Can (2-042)	19	6	Silicone/FEP	371118	371118
O-ring, Housing (2-033)	5	B	Buna-N	341105 (2)	341105 (2)
O-ring, Containment Can (2-042)	19	B	Buna-N	S4003	S4003
O-ring, Housing (2-033)	5	E	EPDM	341103 (2)	341103 (2)
O-ring, Containment Can (2-042)	19	E	EPDM	S4001	S4001
O-ring, Housing (2-033)	5	V	Viton	341108 (2)	341108 (2)
O-ring, Containment Can (2-042)	19	V	Viton	S4002	S4002
O-ring, Housing (2-033)	5	K	Kalrez	341109 (2)	341109 (2)
O-ring, Containment Can (2-042)	19	K	Kalrez	S4004	S4004
Position 12 – Retaining Rings					
Retaining Ring (Gears & Inner Magnet)	28	0	316 SS	366702 (6)	366702 (6)
Position 13 – Bearing Pins					
Pin, Bearing Lock	25	0	Teflon	361801 (4)	361801 (4)
Pin, Bearing Lock (High Temperature)	25	6	316 SS	361807 (4)	361807 (4)
Position 14 – Magnetic Coupling					
Inner Magnet, MCU – 1/2" Bore	11	U	316 SS/SmCo	SIMCU-04	SIMCU-04
Outer Magnet, MCU – NEMA 56C	10	U (Pos. 8 = 0)	CS/ SmCo	SOMCU-5	SOMCU-5
Outer Magnet, MCU – NEMA 143/145TC	10	U (Pos. 8 = 1)	CS/ SmCo	SOMCU-7	SOMCU-7
Outer Magnet, MCU – IEC 71 (B5)	10	U (Pos. 8 = 2)	CS/ SmCo	SOMCU-71	SOMCU-71
Outer Magnet, MCU – IEC 80 (B5)	10	U (Pos. 8 = 3)	CS/ SmCo	SOMCU-80	SOMCU-80
Outer Magnet, MCU – IEC 90 (B5)	10	U (Pos. 8 = 4)	CS/ SmCo	SOMCU-90	SOMCU-90
Outer Magnet, MCU – NEMA 182/184TC	10	U (Pos. 8 = 5)	CS/ SmCo	SOMCU-9	SOMCU-9
Outer Magnet, MCU – IEC 100/112 (B5)	10	U (Pos. 8 = 8)	CS/ SmCo	SOMCU-112	SOMCU-112
Inner Magnet, MCB – 1/2" Bore	11	B	316 SS/SmCo	SIMCB-04	SIMCB-04
Outer Magnet, MCB – NEMA 56C	10	B (Pos. 8 = 0)	CS/ SmCo	SOMCB-5	SOMCB-5
Outer Magnet, MCB – NEMA 143/145TC	10	B (Pos. 8 = 1)	CS/ SmCo	SOMCB-7	SOMCB-7
Outer Magnet, MCB – IEC 71 (B5)	10	B (Pos. 8 = 2)	CS/ SmCo	SOMCB-71	SOMCB-71
Outer Magnet, MCB – IEC 80 (B5)	10	B (Pos. 8 = 3)	CS/ SmCo	SOMCB-80	SOMCB-80
Outer Magnet, MCB – IEC 90 (B5)	10	B (Pos. 8 = 4)	CS/ SmCo	SOMCB-90	SOMCB-90
Outer Magnet, MCB – NEMA 182/184TC	10	B (Pos. 8 = 5)	CS/ SmCo	SOMCB-9	SOMCB-9
Outer Magnet, MCB – IEC 100/112 (B5)	10	B (Pos. 8 = 8)	CS/ SmCo	SOMCB-112	SOMCB-112
Inner Magnet, MCV – 1/2" Bore	11	V	316 SS/SmCo	SIMCV-04	SIMCV-04
Outer Magnet, MCV – NEMA 56C	10	V (Pos. 8 = 0)	CS/ SmCo	SOMCV-5	SOMCV-5
Outer Magnet, MCV – NEMA 143/145TC	10	V (Pos. 8 = 1)	CS/ SmCo	SOMCV-7	SOMCV-7
Outer Magnet, MCV – IEC 71 (B5)	10	V (Pos. 8 = 2)	CS/ SmCo	SOMCV-71	SOMCV-71
Outer Magnet, MCV – IEC 80 (B5)	10	V (Pos. 8 = 3)	CS/ SmCo	SOMCV-80	SOMCV-80
Outer Magnet, MCV – IEC 90 (B5)	10	V (Pos. 8 = 4)	CS/ SmCo	SOMCV-90	SOMCV-90
Outer Magnet, MCV – NEMA 182/184TC	10	V (Pos. 8 = 5)	CS/ SmCo	SOMCV-9	SOMCV-9
Outer Magnet, MCV – IEC 100/112 (B5)	10	V (Pos. 8 = 8)	CS/ SmCo	SOMCV-112	SOMCV-112
Key, Inner Magnet	13	U, B, V	316 SS	3150017	3150017
Position 15 – Containment Can					
Containment Can, Single Wall (Domed)	12	S	316 SS	S2002	S2002
Dual Kan Option (Modified Parts)	12	D	316 SS	Consult Factory	
Suffix – Trim Options					
Temperature Trim (Gears & Bearings)	–	-8(T) ¹	–	Consult Factory	
Viscosity Trim (Gears)	–	-9D, -9T	–		

1 - T = Application Temperature in °F (e.g., -8(300) = Temperature Trim at 300°F).

Liquiflo Chemical Processing Pumps™	H-Series Gear Pumps BOM: MAG-DRIVE, CC Models H5R & H5F
---	--

Part Description	Drwg. Item #	Alloy-C Construction			
		Code	Material	H5R	H5F
Position 3 – Basic Material & Port Type (Center Housing, Alignment Pins & Hardware)					
Center Housing, NPT	21	H	Alloy-C	340002	340002
Center Housing, Flanged (ANSI 150# RF)	21	C	Alloy-C	340007	340007
Center Housing, BSPT	21	Y	Alloy-C	340004	340004
Pin, Housing Alignment	24	H, C, Y	Alloy-C	360804 (4)	360804 (4)
Bolt, Housing (#10-32 x 1.80 HHCS)	4	H, C, Y	18-8 SS	342003 (4)	342003 (4)
Nut, Housing (#10-32)	29	H, C, Y	18-8 SS	342101 (4)	342101 (4)
Lockwasher, Housing (#10)	30	H, C, Y	18-8 SS	5018 (4)	5018 (4)
Bolt, Front Housing (3/8-16 x 1.50 HHCS)	27	H, C, Y	18-8 SS	620833 (4)	620833 (4)
Nut, Front Housing (3/8-16)	26	H, C, Y	18-8 SS	S1003 (4)	S1003 (4)
Lockwasher, Front Housing (3/8)	31	H, C, Y	18-8 SS	S1004 (4)	S1004 (4)
Bolt, Cont. Can (1/4-28 x 5/8 HHCS)	18	H, C, Y	18-8 SS	S620013 (6)	S620013 (6)
Lockwasher, Cont. Can (1/4)	32	H, C, Y	18-8 SS	863701 (6)	863701 (6)
Position 4 – Drive Gear					
Gear	22	1	Alloy-C	950025	950020
Gear	22	3	Teflon	950018	950017
Gear	22	6	316 SS	X	X
Gear	22	K	Kynar	950089	950079
Gear	22	P	PEEK	950027	950022
Key, Gear	23A	1, 3, K, P	Alloy-C	950030	950030
Position 5 – Idler Gear					
Gear	6	1	Alloy-C	950025	950020
Gear	6	2	Carbon	950028	950023
Gear	6	3	Teflon	950018	950017
Gear	6	6	316 SS	X	X
Gear	6	8	Ryton	950026	950021
Gear	6	K	Kynar	950089	950079
Gear	6	P	PEEK	950027	950022
Key, Gear	23B	1, 2, 3, 8, K, P	Alloy-C	950030	950030
Position 6 – Wear Plates					
Wear Plate, Relieved	7	3	Teflon	310590 (4)	340521 (4)
Wear Plate, Relieved	7	4	SiC	310597 (4)	340582 (4)
Wear Plate, Relieved	7	E	Carbon 60	310596 (4)	340523 (4)
Wear Plate, Relieved	7	P	PEEK	310591 (4)	340524 (4)
Position 7 – Bearings					
Bearing, Short	3A	3	Teflon	950090 (3)	950090 (3)
Bearing, Long	3B	3	Teflon	950091 (1)	950091 (1)
Bearing, Short	3A	B	SiC	950014 (3)	950014 (3)
Bearing, Long	3B	B	SiC	950045 (1)	950045 (1)
Bearing, Short	3A	E	Carbon 60	950012 (3)	950012 (3)
Bearing, Long	3B	E	Carbon 60	950043 (1)	950043 (1)
Bearing, Short	3A	P	PEEK	950013 (3)	950013 (3)
Bearing, Long	3B	P	PEEK	950044 (1)	950044 (1)
Position 8 – Outer Magnet Bore (Pedestal, Shims, Adapter & Motor-Mounting Hardware)					
Pedestal – 5/8" (NEMA 56C)	16	0	CI/Epoxy	SP000	SP000
Pedestal – 7/8" (NEMA 143/145TC)	16	1	CI/Epoxy	SP000	SP000
Pedestal – 14 mm (IEC 71 - B5)	16	2	CI/Epoxy	SP001	SP001
Pedestal – 19 mm (IEC 80 - B5)	16	3	CI/Epoxy	SP002	SP002
Pedestal – 24 mm (IEC 90 - B5)	16	4	CI/Epoxy	SP002	SP002
Pedestal – 1-1/8" (NEMA 182/184TC)	16	5	CI/Epoxy	SP000	SP000
Shim, Pedestal (NEMA 182/184TC)	-	5	303 SS	SHIM-S105 (4)	SHIM-S105 (4)
Adapter Plate (NEMA 182/184TC)	-	5	CS/Epoxy	SP0046	SP0046
Pedestal – 28 mm (IEC 100/112 - B5)	16	8	CI/Epoxy	SP002	SP002
Shim, Pedestal (IEC 100/112 - B5)	-	8	CS/Epoxy	SHIM-112 (2)	SHIM-112 (2)
Adapter Plate (IEC 100/112 - B5)	-	8	CS/Epoxy	SP0048	SP0048
Motor-Mounting Hardware	15/34	0-5, 8	18-8 SS	See Appendix 4	
Position 9 – Bearing Flush Option (Front & Rear Housings)					
Front Housing, MC, Standard & EBF	8	0, 1	Alloy-C	950040	950040
Front Housing, MC, IBF	8	2	Alloy-C	950042	950042
Rear Housing, Standard	2	0	Alloy-C	950007	950007
Rear Housing, EBF	2	1	Alloy-C	950011	950011
Rear Housing, IBF	2	2	Alloy-C	950009	950009

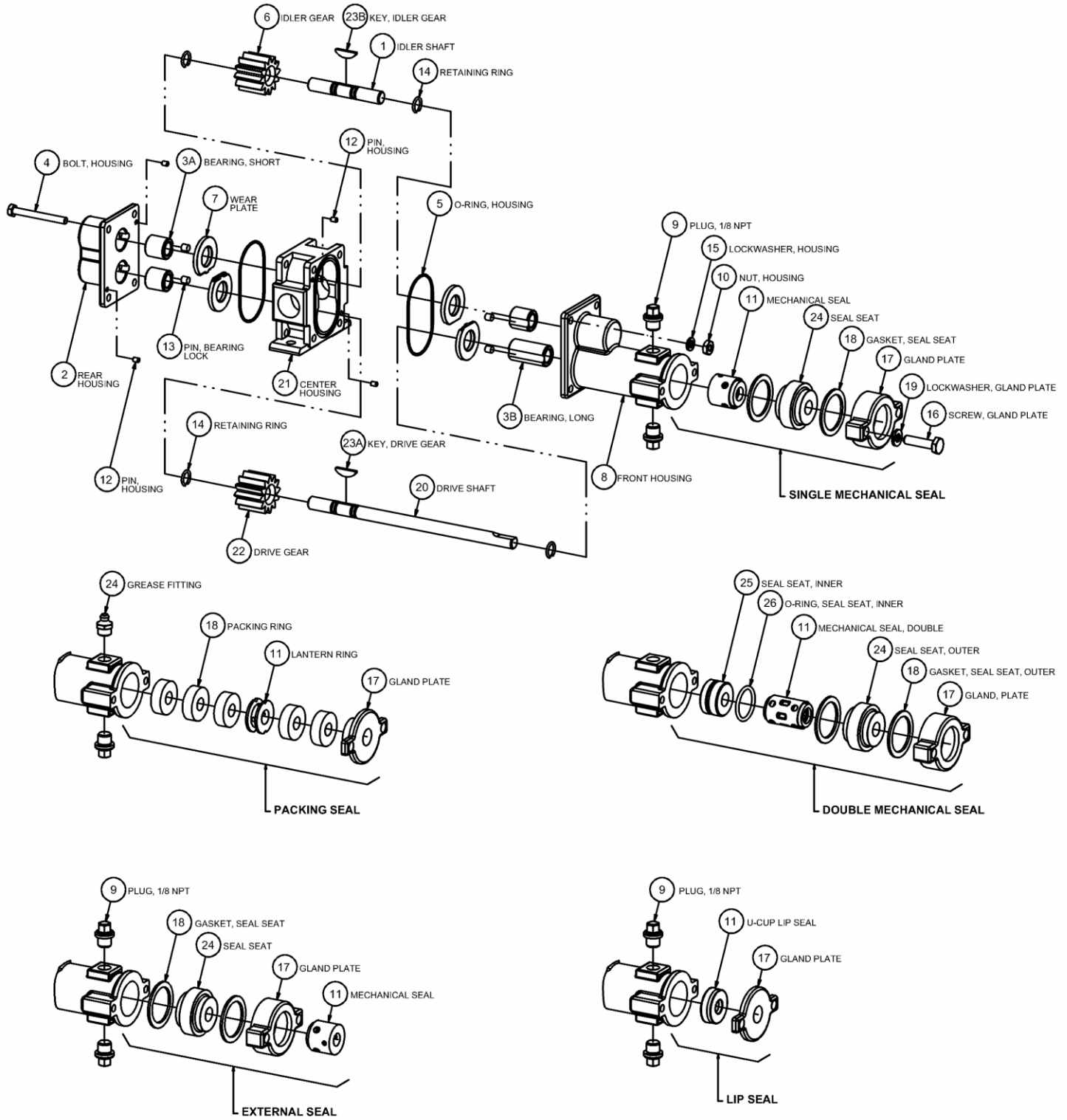
Liquiflo Chemical Processing Pumps™	H-Series Gear Pumps BOM: MAG-DRIVE, CC Models H5R & H5F
---	--

Part Description	Drwg. Item #	Alloy-C Construction			
		Code	Material	H5R	H5F
Position 9 – Bearing Flush Option [Continued]					
Plug, 1/8 NPT	9	0, 2	Alloy-C	362301 (1)	362301 (1)
Plug, 1/8 NPT	9	1	Alloy-C	362301 (3)	362301 (3)
Position 10 – Shafts					
Drive Shaft, MC, Uncoated	20	0	Alloy-C	950036	950036
Drive Shaft, MC, CO-Coated	20	1	Alloy-C/CO	950036-CO	950036-CO
Drive Shaft, MC, TC-Coated	20	2	Alloy-C/TC	950036-TC	950036-TC
Idler Shaft, Uncoated	1	0	Alloy-C	950032	950032
Idler Shaft, CO-Coated	1	1	Alloy-C/CO	950032-CO	950032-CO
Idler Shaft, TC-Coated	1	2	Alloy-C/TC	950032-TC	950032-TC
Position 11 – O-Rings					
O-ring, Housing (2-033)	5	0	Teflon	341102 (2)	341102 (2)
O-ring, Containment Can (2-042)	19	0	Teflon	S4000	S4000
O-ring, Housing (2-033)	5	6	Silicone/FEP	341113 (2)	341113 (2)
O-ring, Containment Can (2-042)	19	6	Silicone/FEP	371118	371118
O-ring, Housing (2-033)	5	B	Buna-N	341105 (2)	341105 (2)
O-ring, Containment Can (2-042)	19	B	Buna-N	S4003	S4003
O-ring, Housing (2-033)	5	E	EPDM	341103 (2)	341103 (2)
O-ring, Containment Can (2-042)	19	E	EPDM	S4001	S4001
O-ring, Housing (2-033)	5	V	Viton	341108 (2)	341108 (2)
O-ring, Containment Can (2-042)	19	V	Viton	S4002	S4002
O-ring, Housing (2-033)	5	K	Kalrez	341109 (2)	341109 (2)
O-ring, Containment Can (2-042)	19	K	Kalrez	S4004	S4004
Position 12 – Retaining Rings					
Retaining Ring (Gears & Inner Magnet)	28	0	Alloy-C	366701 (6)	366701 (6)
Position 13 – Bearing Pins					
Pin, Bearing Lock	25	0	Teflon	361801 (4)	361801 (4)
Pin, Bearing Lock (High Temperature)	25	1	Alloy-C	361806 (4)	361806 (4)
Position 14 – Magnetic Coupling					
Inner Magnet, MCU – 1/2" Bore	11	U	Alloy-C/SmCo	SIMCU-14	SIMCU-14
Outer Magnet, MCU – NEMA 56C	10	U (Pos. 8 = 0)	CS/ SmCo	SOMCU-5	SOMCU-5
Outer Magnet, MCU – NEMA 143/145TC	10	U (Pos. 8 = 1)	CS/ SmCo	SOMCU-7	SOMCU-7
Outer Magnet, MCU – IEC 71 (B5)	10	U (Pos. 8 = 2)	CS/ SmCo	SOMCU-71	SOMCU-71
Outer Magnet, MCU – IEC 80 (B5)	10	U (Pos. 8 = 3)	CS/ SmCo	SOMCU-80	SOMCU-80
Outer Magnet, MCU – IEC 90 (B5)	10	U (Pos. 8 = 4)	CS/ SmCo	SOMCU-90	SOMCU-90
Outer Magnet, MCU – NEMA 182/184TC	10	U (Pos. 8 = 5)	CS/ SmCo	SOMCU-9	SOMCU-9
Outer Magnet, MCU – IEC 100/112 (B5)	10	U (Pos. 8 = 8)	CS/ SmCo	SOMCU-112	SOMCU-112
Inner Magnet, MCB – 1/2" Bore	11	B	Alloy-C/SmCo	SIMCB-14	SIMCB-14
Outer Magnet, MCB – NEMA 56C	10	B (Pos. 8 = 0)	CS/ SmCo	SOMCB-5	SOMCB-5
Outer Magnet, MCB – NEMA 143/145TC	10	B (Pos. 8 = 1)	CS/ SmCo	SOMCB-7	SOMCB-7
Outer Magnet, MCB – IEC 71 (B5)	10	B (Pos. 8 = 2)	CS/ SmCo	SOMCB-71	SOMCB-71
Outer Magnet, MCB – IEC 80 (B5)	10	B (Pos. 8 = 3)	CS/ SmCo	SOMCB-80	SOMCB-80
Outer Magnet, MCB – IEC 90 (B5)	10	B (Pos. 8 = 4)	CS/ SmCo	SOMCB-90	SOMCB-90
Outer Magnet, MCB – NEMA 182/184TC	10	B (Pos. 8 = 5)	CS/ SmCo	SOMCB-9	SOMCB-9
Outer Magnet, MCB – IEC 100/112 (B5)	10	B (Pos. 8 = 8)	CS/ SmCo	SOMCB-112	SOMCB-112
Inner Magnet, MCV – 1/2" Bore	11	V	Alloy-C/SmCo	SIMCV-14	SIMCV-14
Outer Magnet, MCV – NEMA 56C	10	V (Pos. 8 = 0)	CS/ SmCo	SOMCV-5	SOMCV-5
Outer Magnet, MCV – NEMA 143/145TC	10	V (Pos. 8 = 1)	CS/ SmCo	SOMCV-7	SOMCV-7
Outer Magnet, MCV – IEC 71 (B5)	10	V (Pos. 8 = 2)	CS/ SmCo	SOMCV-71	SOMCV-71
Outer Magnet, MCV – IEC 80 (B5)	10	V (Pos. 8 = 3)	CS/ SmCo	SOMCV-80	SOMCV-80
Outer Magnet, MCV – IEC 90 (B5)	10	V (Pos. 8 = 4)	CS/ SmCo	SOMCV-90	SOMCV-90
Outer Magnet, MCV – NEMA 182/184TC	10	V (Pos. 8 = 5)	CS/ SmCo	SOMCV-9	SOMCV-9
Outer Magnet, MCV – IEC 100/112 (B5)	10	V (Pos. 8 = 8)	CS/ SmCo	SOMCV-112	SOMCV-112
Key, Inner Magnet	13	U, B, V	Alloy-C	3150018	3150018
Position 15 – Containment Can					
Containment Can, Single Wall (Domed)	12	S	Alloy-C	S2003	S2003
Dual Kan Option (Modified Parts)	12	D	Alloy-C	Consult Factory	
Suffix – Trim Options					
Temperature Trim (Gears & Bearings)	–	-8(T) ¹	–	Consult Factory	
Viscosity Trim (Gears)	–	-9D, -9T	–		

1 - T = Application Temperature in °F (e.g., -8(300) = Temperature Trim at 300°F).

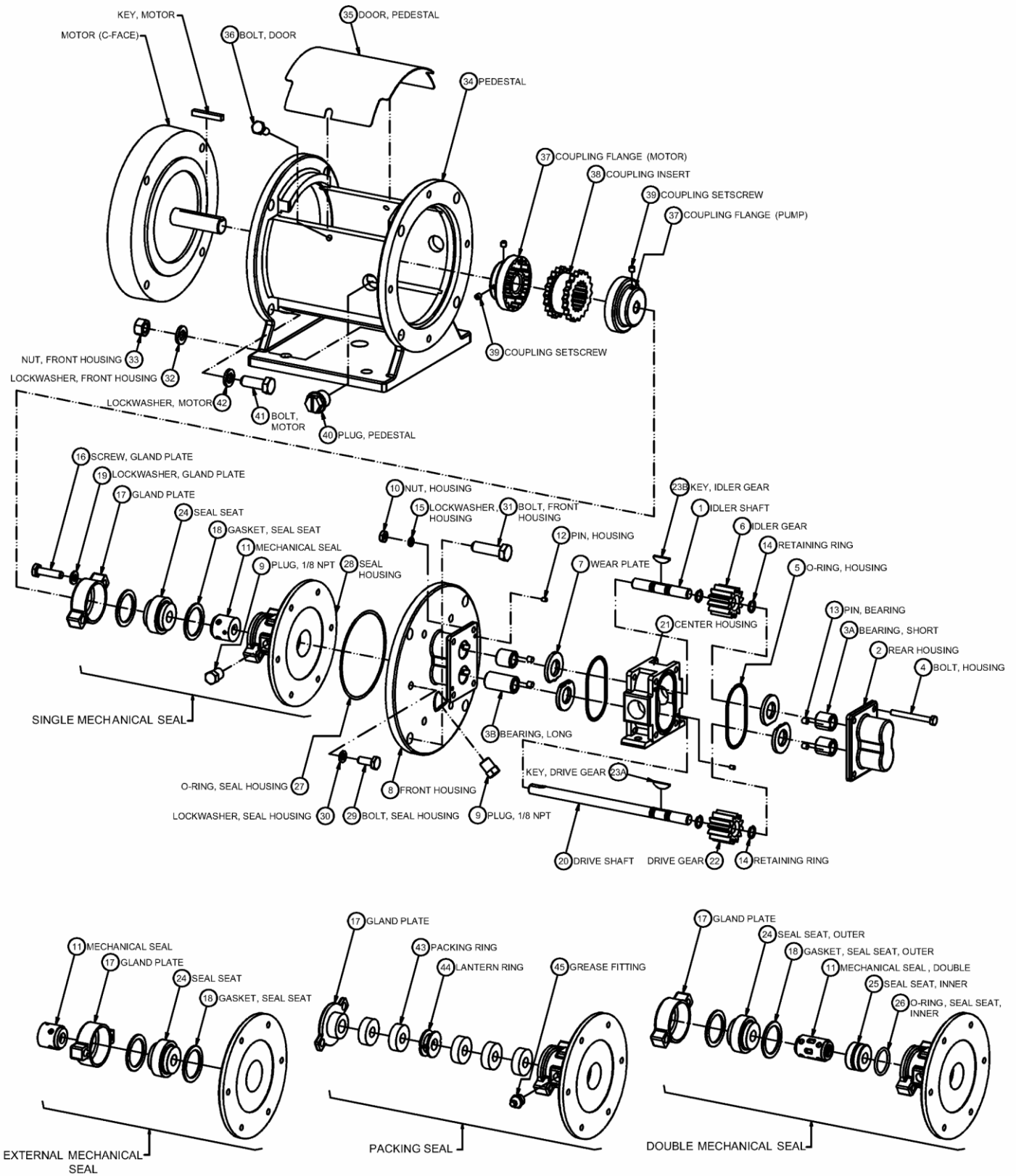
Appendix 1: Exploded View Reference Drawings

Models H5R & H5F – SEALED, Long-Coupled



Appendix 1: Exploded View Reference Drawings (continued)

Models H5R & H5F – SEALED, Close-Coupled



Appendix 2: Meaning of Abbreviated Terms

Term	Meaning	Notes
ANSI	American National Standards Institute	e.g., ANSI 150# flanges
BSPT	British Standard Pipe Threads	Type of threaded port
Buna-N	Buna Nitrile (rubber)	O-ring material; NBR; elastomer
CC	Close-Coupled	Method of pump-motor coupling
CI	Cast Iron	Pedestal structural material
CO	Chrome Oxide	Shaft coating material
Cont. Can	Containment Can	Part of Mag-drive pump
CS	Carbon Steel	Outer magnet and adapter structural material
DMS	Double Mechanical Seal	Internally mounted double seal
Drwg.	Drawing (Item #)	See corresponding exploded view reference drawing
EBF	External Bearing Flush	Housing option for H-Series pumps
EMS	External Mechanical Seal	Externally mounted single seal
EPDM	Ethylene-Propylene-Diene Monomer (rubber)	O-ring material; elastomer
FH-SHCS	Flat Head, Socket Head Cap Screw	Type of bolt
HHCS	Hex Head Cap Screw	Type of bolt
HY	High-Yield (key)	Type of gear key
IBF	Internal Bearing Flush	Housing option for H-Series pumps
LC	Long-Coupled	Method of pump-motor coupling
LY	Low-Yield (key)	Type of gear key
MC	Magnetically Coupled	Mag-drive pump
MS	Mechanical Seal	Includes single & double seals
NPT	National Pipe Threads	Type of threaded port
PEEK	Poly-Ether-Ether-Ketone (plastic)	Bearing Grade PEEK; material option for gears, bearings & wear plates
Pos.	Position (#)	Position number of model code
PS	Packing Seal	Comprised of Teflon or Graphoil packing rings
RF	Raised Face	Type of flange
SHCS	Socket Head Cap Screw	Type of bolt
SiC	Silicon Carbide	Bearing, wear plate and seal seat material
Silicone/FEP	Silicone Rubber (encapsulated with) Fluoro-ethylene-propylene (plastic)	O-ring material; suggested for temperature cycling applications
SmCo	Samarium Cobalt	Inner and outer magnet material
SMS	Single Mechanical Seal	Internally mounted single seal
SS	Stainless Steel	e.g., 303 SS, 316 SS, 18-8 SS
TC	Tungsten Carbide	Shaft coating material
X	Not Available or Not Applicable	Used in lieu of Part Number
#	Number or Pound	e.g., Position #, Part #, 150# flanges, etc.

Appendix 3: Additional Parts for SEALED-CC Configuration

Mechanical Coupling, Pedestal & Adapter

Model Code Pos. 14	Motor Frame	Mechanical Coupling ¹				Pedestal ³	Adapter ⁴
		Part #	Size	Type (Woods)	Max Torque ²	Part #	Part #
0	NEMA 56C	A-5105	1/2" x 5/8"	4J	156	SP009	X
1	NEMA 143/145TC	A-5106	1/2" x 7/8"	4J	156	SP009	X
2	IEC 71–B5 Flange	A-5116	1/2" x 14 mm	4J	156	SP010	X
3	IEC 80–B5 Flange	A-5114	1/2" x 19 mm	4J	156	SP011	X
4	IEC 90–B5 Flange	A-5112	1/2" x 24 mm	4J	156	SP011	X
5	NEMA182/184TC	A-5224	1/2" x 1-1/8"	5J	312	SP009	SP0046
8	IEC 100/112–B5 Flg.	A-5237	1/2" x 28 mm	5J	312	SP011	SP0048

1 – Coupling material is Steel flanges with EPDM insert. Coupling Temperature Range is -30°F to 275°F.

2 – Maximum Torque rating in inch-pounds at 75°F (24°C). Consult factory for couplings with higher torque ratings.

3 – Material is Cast Iron/Epoxy. Pedestal includes 303 SS door (Part # 865078) and two 1/4-20 x 5/8 bolts (Part # 620008).

4 – Material is Carbon Steel/Epoxy.

Assembly Hardware

Model Code Pos. 14	Part Description	Material	Size	Bolt Type	Part #	Qty.
0 thru 5	Bolt, Seal Housing	18-8 SS	1/4-28 x 5/8	HHCS	S620013	6
	Lockwasher, Seal Housing	18-8 SS	1/4	–	863701	6
	Bolt, Front Housing	18-8 SS	3/8-16 x 1-1/2	HHCS	620833	4
	Nut, Front Housing	18-8 SS	3/8-16	–	S1003	4
	Lockwasher, Front Housing	18-8 SS	3/8	–	S1004	4
0, 1, 5	Bolt, Motor	18-8 SS	3/8-16 x 1-1/4	HHCS	S1000	4
	Lockwasher, Motor	18-8 SS	3/8	–	S1004	4
5	Bolt, Adapter (NEMA 182/184TC) ¹	18-8 SS	1/2-13 x 1	SHCS	641105	4
2	Bolt, Motor	18-8 SS	3/8-16 x 1-1/2	SHCS	781117	4
	Nut, Motor	18-8 SS	3/8-16	–	S1003	4
	Lockwasher, Motor	18-8 SS	3/8	–	S1004	4
3, 4	Bolt, Motor	18-8 SS	M10 x 40	SHCS	S1011	4
	Nut, Motor	18-8 SS	M10 Std. Hex	–	S1013	4
	Lockwasher, Motor	18-8 SS	M10	–	S1012	4
8	Bolt, Motor	18-8 SS	1/2-13 x 2	FH-SHCS	S641111	4
	Nut, Motor	18-8 SS	1/2-13	–	641108	4
	Lockwasher, Motor	18-8 SS	1/2	–	641107	4
	Bolt, Adapter (IEC 100/112-B5) ²	18-8 SS	3/8-16 X 1	SHCS	781118	4
	Lockwasher, Adapter ²	18-8 SS	3/8	–	S1004	4

1 – For mounting adapter plate (Part # SP0046) to motor.

2 – For mounting adapter plate (Part # SP0048) to CC-pedestal (Part # SP011).

Appendix 4: Mag-Drive Motor-Mounting Hardware

Mag-Drive Motor-Mounting Hardware

Model Code Pos. 8	Part Description	Material	Size	Bolt Type	Part #	Qty.
0, 1, 5	Bolt, Motor	18-8 SS	3/8-16 x 1-1/4	HHCS	S1000	4
	Lockwasher, Motor	18-8 SS	3/8	–	S1004	4
5	Bolt, Adapter (NEMA 182/184TC) ¹	18-8 SS	1/2-13 x 1	SHCS	641105	4
2	Bolt, Motor	18-8 SS	3/8-16 x 1-1/2	SHCS	781117	4
	Nut, Motor	18-8 SS	3/8-16	–	S1003	4
	Lockwasher, Motor	18-8 SS	3/8	–	S1004	4
3, 4	Bolt, Motor	18-8 SS	M10 x 40	SHCS	S1011	4
	Nut, Motor	18-8 SS	M10 Std. Hex	–	S1013	4
	Lockwasher, Motor	18-8 SS	M10	–	S1012	4
8	Bolt, Motor	18-8 SS	1/2-13 x 2	FH-SHCS	S641111	4
	Nut, Motor	18-8 SS	1/2-13	–	641108	4
	Lockwasher, Motor	18-8 SS	1/2	–	641107	4
	Bolt, Adapter (IEC 100/112-B5) ²	18-8 SS	3/8-16 X 1	SHCS	781118	4
	Lockwasher, Adapter ²	18-8 SS	3/8	–	S1004	4

1 – For mounting adapter plate (Part # SP0046) to motor.

2 – For mounting adapter plate (Part # SP0048) to MC-pedestal (Part # SP002).