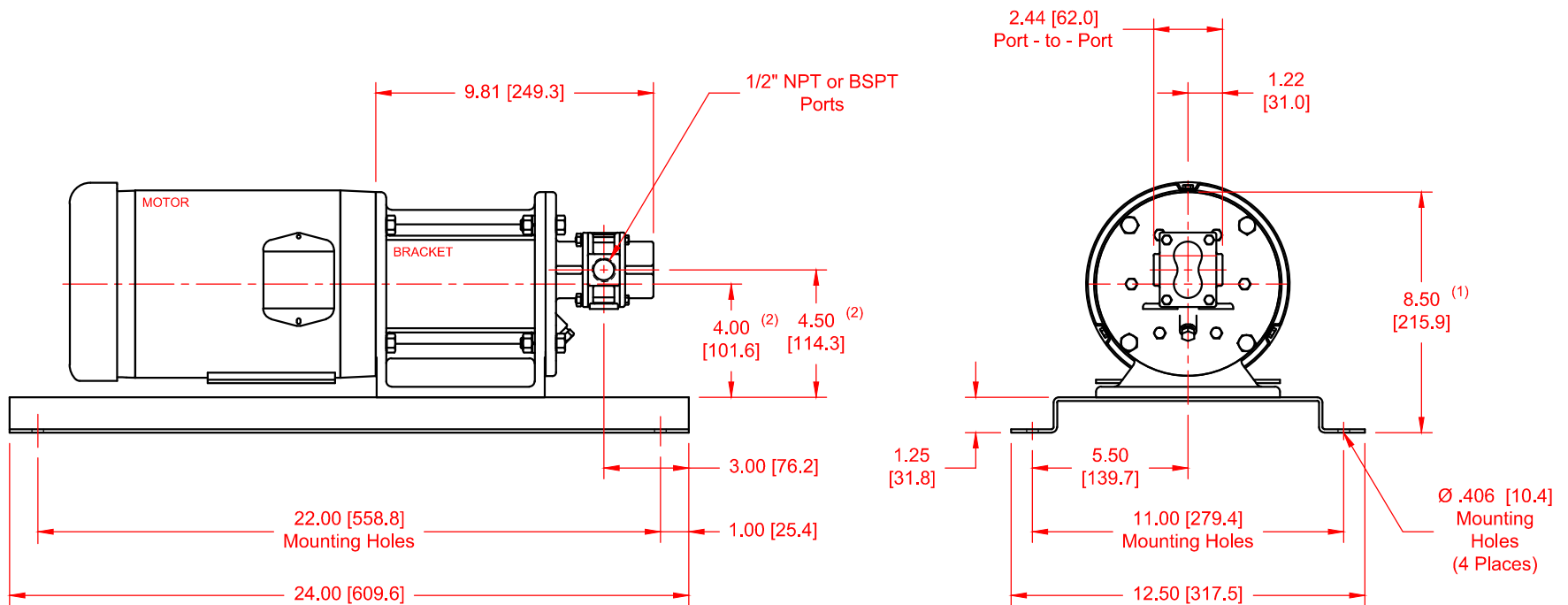


| SERIES | MODEL | CONFIGURATION | SEAL TYPE |
|----------------------|--------------------------|--|--|
| H-Series 3-Series | H1F or H3F 31F or 33F | Sealed or Mag-Drive Gear Pump Close-Coupled Base-Mounted Version with 1/2" NPT or BSPT Ports | Single, Double or External Mechanical Seal, Packing or Mag-Drive (Sealless) |

UNITS: inches [mm]



NOTES:

- 1) Dimension to top of Bracket
- 2) Applies for NEMA 56C, 143TC, 145TC & IEC 71-B5 Motors.