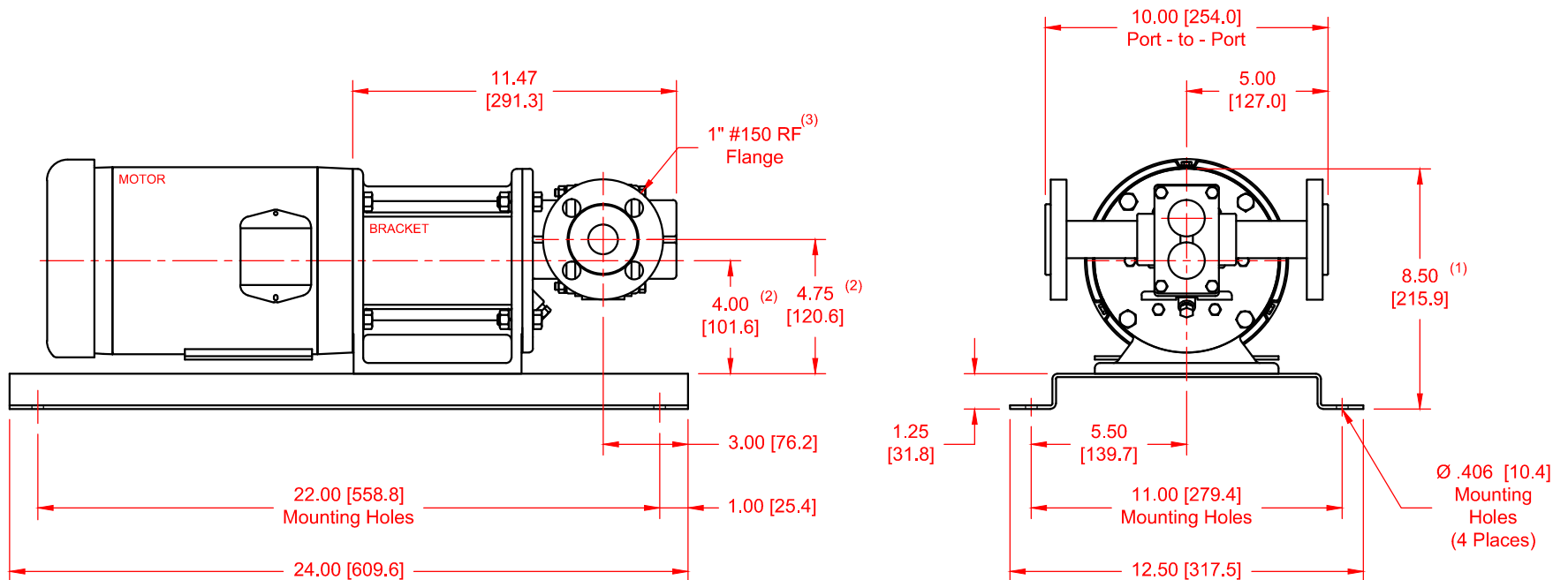


SERIES	MODEL	CONFIGURATION	SEAL TYPE
H-Series 3-Series	H9R 39R	Sealed or Mag-Drive Gear Pump Close-Coupled Base-Mounted Version with RF Flanges.	Single Mechanical Seal, Double Mechanical Seal or Mag-Drive (Sealless)

UNITS: inches [mm]



NOTES:

- 1) Dimension to top of Bracket.
- 2) Applies for NEMA 56C, 143TC, 145TC & IEC 71-B5 Motors.
- 3) Also available with ANSI 1" #300 RF and DN25 PN 16 flanges.