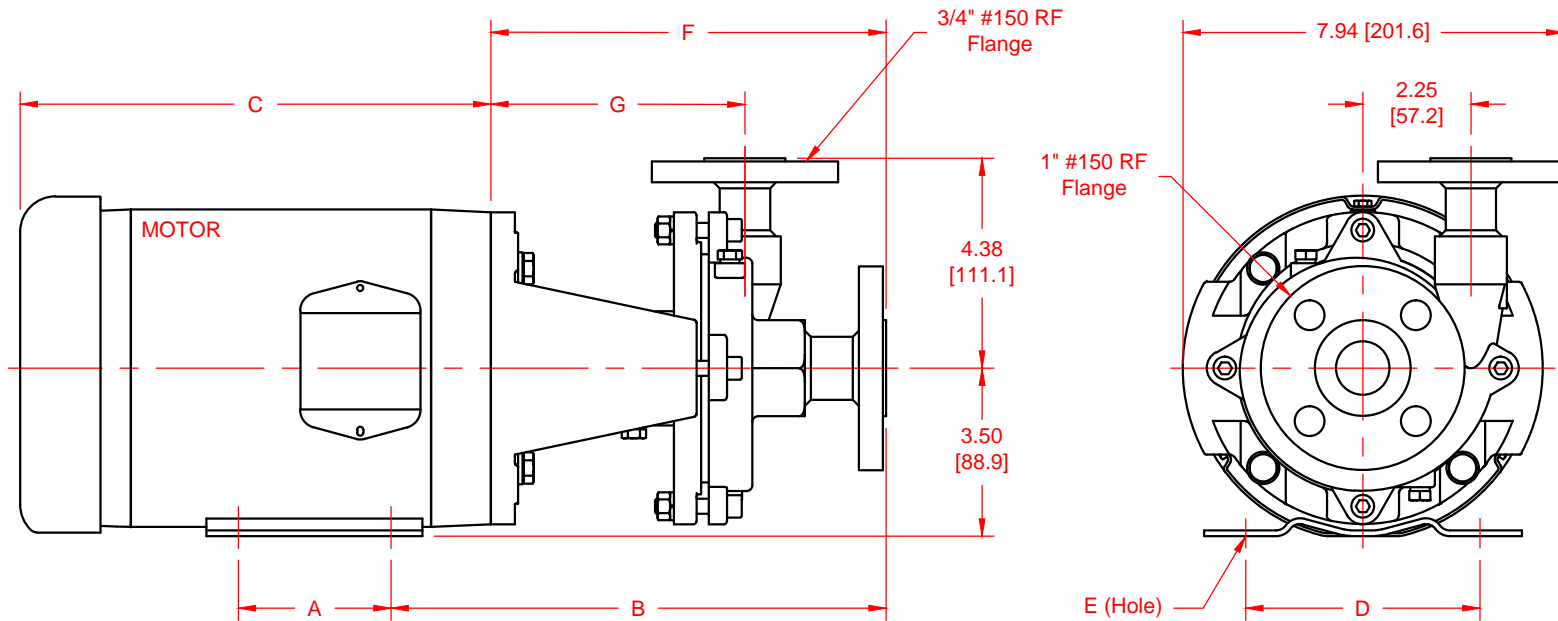


SERIES	MODEL	CONFIGURATION	SEAL TYPE
Centry Series	620	Sealed Centrifugal Pump Close-Coupled with RF Flanges	Single Mechanical Seal, Double Mechanical Seal or Packing

UNITS: inches [mm]

SEAL TYPE	MOTOR	"A"	"B"	"D"	"E"	"F"	"G"
SINGLE (TYPE 9A)	56C	3.00 [88.9]	10.79 [274.1]	4.88 [123.8]	0.34 [8.7]	8.23 [209.0]	5.29 [134.4]
	143TC	4.00 [101.6]	11.10 [282.0]	5.50 [139.7]	0.34 [8.7]	8.23 [209.0]	5.29 [134.4]
	145TC	5.00 [127.0]	11.10 [282.0]	5.50 [139.7]	0.34 [8.7]	8.23 [209.0]	5.29 [134.4]
DOUBLE (TYPE 9T) & PACKING	56C	3.00 [88.9]	12.49 [317.2]	4.88 [123.8]	0.34 [8.7]	9.93 [252.2]	6.99 [177.5]
	143TC	4.00 [101.6]	12.80 [325.1]	5.50 [139.7]	0.34 [8.7]	9.93 [252.2]	6.99 [177.5]
	145TC	5.00 [127.0]	12.80 [325.1]	5.50 [139.7]	0.34 [8.7]	9.93 [252.2]	6.99 [177.5]



NOTES:

- 1) 1.70 in. [43.2 mm] wide Spacer Plate (not shown) is required for pumps with Double Mechanical Seal or Packing.
- 2) See data from motor manufacturer for "C" dimension.