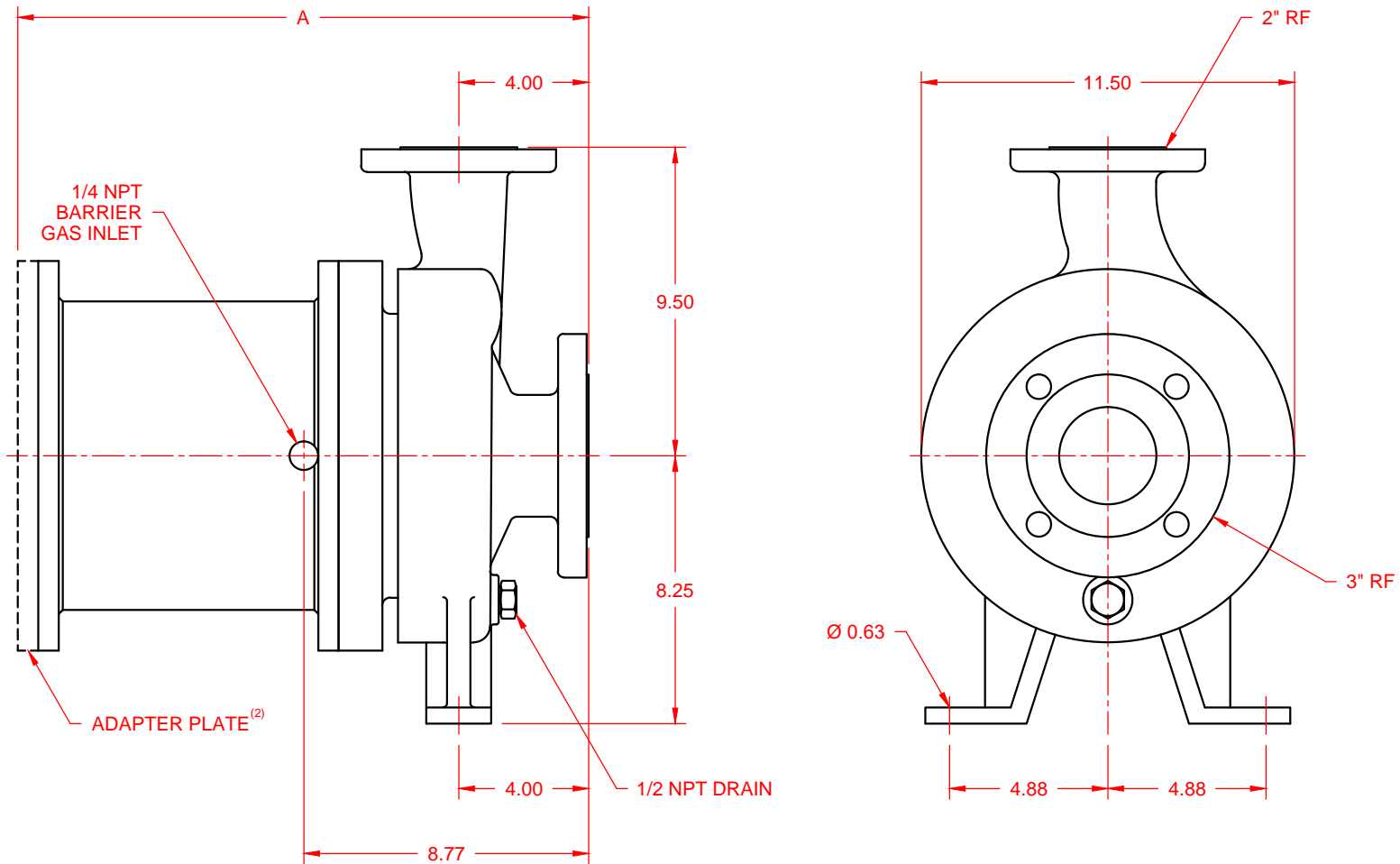


SERIES	GROUP	CONFIGURATION
ENDURA	II	ANSI Centrifugal Pump Air Barrier Mag-Drive, Close-Coupled Version

UNITS: inches

CASING SIZE	MOTOR FRAME													
	POWER FRAME	182/ 184TC	213/ 215TC	254/ 256TC	284/ 286TC	324/ 326TC	364/ 365TC	284/ 286TSC	324/ 326TSC	364/ 365TSC	IEC 132	IEC 160	IEC 180	IEC 200
3 x 2 x 8	A	A	A	A	A	A	A	A	A	A	A	A	A	A
	16.95	17.59	18.09	18.72	19.36	19.98	20.59	17.98	18.49	18.49	18.00	19.18	19.18	19.18



**NOTES:**

- 1) Pump requires motor with feet.
- 2) Adapter Plate applies to all assemblies except Power Frame.