

SERIES	MODEL
Accessories	Relief Valve

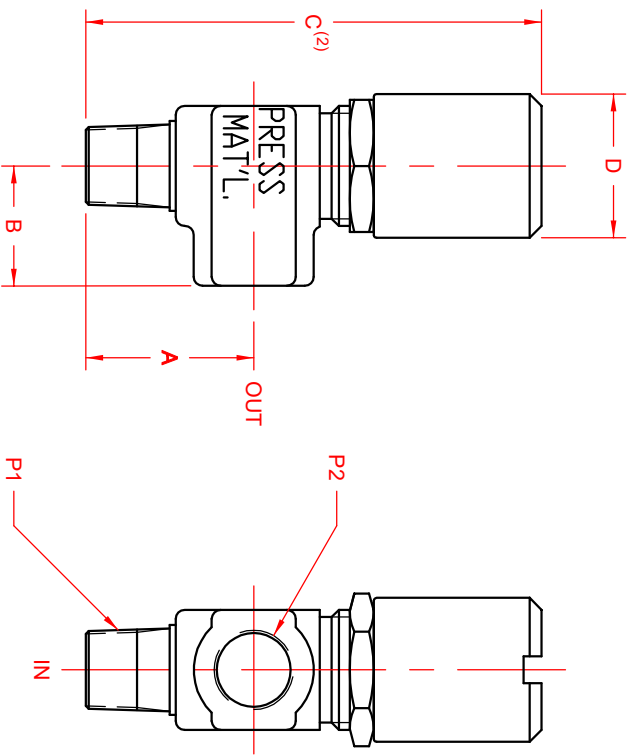
CONFIGURATION

RV1000, RV1000-LP, RV1000-HP, RV1001, RV1001-LP, RV1001-HP
 RV2000, RV2000-LP, RV2001

UNITS: inches [mm]

Family	Dimensions					
	"A"	"B"	"C" Max	"C" Min	"D" Ø	"P1" Male "P2" Female
RV1000	1.75 [44.5]	1.25 [31.8]	5.29 [134.4]	4.50 [114.3]	1.50 [38.1]	1/2" NPT
RV2000	2.34 [59.5]	2.16 [54.8]	8.12 [206.2]	6.50 [165.1]	2.31 [58.7]	1" NPT

P/N	Pressure Setting				Approx. Flow @ 25 PSI	
	Min	Max	PSIG	USGPM	LPM	
RV1000-LP	25	65	50	5.8	22	
RV1001-LP						
RV1000						
RV1001	50	135	100	7.5	28	
RV1000-HP						
RV1001-HP	75	200	150	8.9	34	
RV2000-LP						
RV2000	25	75	50	19	72	
RV2001						
RV2000						
RV2001	50	175	100	25	95	



- NOTES:**
- 1) Test Conditions: Water @ 70°F; discharge to atmosphere (0 PSIG).
 - 2) Actual height is based on pressure setting.
 - 3) Material: 316 SS for RV1000 & RV2000; Alloy-C for RV1001 & RV2001.